

Recombinant Human TOMM40 Protein (Met1-Gly361), N-His tagged

Cat. No. TOMM40-5541H Lot. No. (See product label)

SPECIFICATION

Product Overview	Recombinant human TOMM40 (Met1-Gly361) fused with the N-His tag was expressed in E. coli.
Species	Human
Source	E.coli
ProteinLength	Met1-Gly361
Form	Lyophilized powder/frozen liquid
Molecular Mass	40.20 kDa
Purity	> 90 % as determined by SDS-PAGE
Notes	For research use only.
Storage	Use a manual defrost freezer and avoid repeated freeze thaw cycles. Store at 2 to 8 centigrade for one week. Store at -20 to -80 centigrade for twelve months from the date of receipt.
Storage Buffer	0.01M PBS, pH 7.4, 0.02 % NLS
Reconstitution	Reconstitute in sterile water for a stock solution.

 Tel: 1-631-559-9269 1-516-512-3133

 Email: info@creative-biomart.com  Fax: 1-631-938-8127

 45-1 Ramsey Road, Shirley, NY 11967, USA

Shipping They are shipped out with dry ice/blue ice unless customers require otherwise.

GENE INFORMATION

Gene Name TOMM40 translocase of outer mitochondrial membrane 40 homolog (yeast) [Homo sapiens (human)]

Official Symbol TOMM40

Synonyms TOMM40; translocase of outer mitochondrial membrane 40 homolog (yeast); mitochondrial import receptor subunit TOM40 homolog; C19orf1; D19S1177E; PER EC1; PEREC1; TOM40; p38.5; protein Haymaker; mitochondrial outer membrane protein; translocase of outer membrane 40 kDa subunit homolog; PER-EC1;

Gene ID 10452

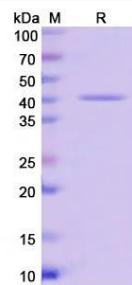
mRNA Refseq NM_001128916

Protein Refseq NP_001122388

MIM 608061

UniProt ID O96008

SDS-PAGE



Tel: 1-631-559-9269 1-516-512-3133

Email: info@creative-biomart.com Fax: 1-631-938-8127

45-1 Ramsey Road, Shirley, NY 11967, USA