

Recombinant Human TOMM40L protein, His-tagged

Cat. No. TOMM40L-32H Lot. No. (See product label)

SPECIFICATION

Product Overview	Recombinant TOMM40L protein, fused to His-tag at N-terminus, was expressed in E.coli and purified by using conventional chromatography techniques.
Species	Human
Source	E.coli
Description	Potential channel-forming protein implicated in import of protein precursors into mitochondria.
Form	50mM Tris, 8M Urea, pH8.0.
Molecular Mass	33.7 kDa
Purity	> 80% as determined by SDS-PAGE and Coomassie blue staining
Storage	Store at -20 or -80 centigrade
Concentration	> 50 µg/mL as determined by microplate BCA method

GENE INFORMATION

Gene Name	TOMM40L
Official Symbol	TOMM40L

 Tel: 1-631-559-9269 1-516-512-3133

 Email: info@creative-biomart.com  Fax: 1-631-938-8127

 45-1 Ramsey Road, Shirley, NY 11967, USA

Synonyms TOMM40B

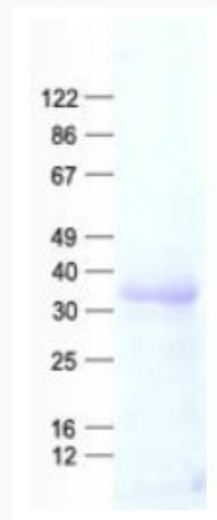
Gene ID 84134


mRNA Refseq NM_032174.6

Protein Refseq NP_115550.2


UniProt ID Q969M1

**SDS-PAGE of
TOMM40L-32H**



 Tel: 1-631-559-9269 1-516-512-3133

 Email: info@creative-biomart.com  Fax: 1-631-938-8127

 45-1 Ramsey Road, Shirley, NY 11967, USA