

Recombinant Human TOMM6 Protein, Myc/DDK-tagged, C13 and N15-labeled

Cat. No. TOMM6-4737H **Lot. No.** (See product label)

SPECIFICATION

Product Overview	TOMM6 MS Standard C13 and N15-labeled recombinant protein (NP_001127965) with a C-terminal MYC/DDK tag, was expressed in HEK293 cells.
Species	Human
Source	HEK293
Description	TOMM6 (Translocase Of Outer Mitochondrial Membrane 6) is a Protein Coding gene. Among its related pathways are Metabolism of proteins and Mitophagy.
Molecular Mass	7.8 kDa
AA Sequence	MASSTVPVSAAGSANETPEIPDNVGDWLRGVYRFATDRNDFRRNLILNLGLFAAGV WLARNLSDIDLMAPQPGVTRTRPLEQKLISEEDLAANDILDYKDDDDKV
Purity	> 80% as determined by SDS-PAGE and Coomassie blue staining
Stability	Stable for 3 months from receipt of products under proper storage and handling conditions.
Storage	Store at -80 centigrade. Avoid repeated freeze-thaw cycles.
Concentration	50 µg/mL as determined by BCA

 Tel: 1-631-559-9269 1-516-512-3133

 Email: info@creative-biomart.com  Fax: 1-631-938-8127

 45-1 Ramsey Road, Shirley, NY 11967, USA

Storage Buffer 100 mM glycine, 25 mM Tris-HCl, pH 7.3.

GENE INFORMATION

Gene Name TOMM6 translocase of outer mitochondrial membrane 6 [Homo sapiens (human)]

Official Symbol TOMM6

Synonyms TOMM6; translocase of outer mitochondrial membrane 6; OBTP; TOM6; mitochondrial import receptor subunit TOM6 homolog; over-expressed breast tumor protein; overexpressed breast tumor protein; translocase of outer membrane 6 kDa subunit homolog; translocase of outer mitochondrial membrane 6 homolog

Gene ID 100188893

mRNA Refseq NM_001134493

Protein Refseq NP_001127965

MIM 616168

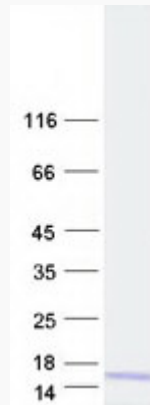
UniProt ID Q96B49

 Tel: 1-631-559-9269 1-516-512-3133

 Email: info@creative-biomart.com  Fax: 1-631-938-8127

 45-1 Ramsey Road, Shirley, NY 11967, USA

SDS-PAGE



 Tel: 1-631-559-9269 1-516-512-3133

 Email: info@creative-biomart.com  Fax: 1-631-938-8127

 45-1 Ramsey Road, Shirley, NY 11967, USA