

Recombinant Human TOP1 protein, His&Myc-tagged

Cat. No. TOP1-3635H Lot. No. (See product label)

SPECIFICATION

Product Overview	Recombinant Human TOP1 protein(P11387)(190-765aa), fused with N-terminal His tag and C-terminal Myc tag, was expressed in Insect cells.
Species	Human
Source	Insect cells
ProteinLength	190-765aa
Tag	N-His&C-Myc
Form	If the delivery form is liquid, the default storage buffer is Tris/PBS-based buffer, 5%-50% glycerol. If the delivery form is lyophilized powder, the buffer before lyophilization is Tris/PBS-based buffer, 6% Trehalose, pH 8.0.
Molecular Mass	72.2 kDa
Purity	Greater than 90% as determined by SDS-PAGE. Greater than 90% as determined by SEC-HPLC.
Storage	Store at -20°C/-80°C upon receipt, aliquoting is necessary for mutiple use. Avoid repeated freeze-thaw cycles.
Reconstitution	We recommend that this vial be briefly centrifuged prior to opening to bring the contents to the bottom. Please reconstitute protein in deionized sterile water to a

 Tel: 1-631-559-9269 1-516-512-3133

 Email: info@creative-biomart.com  Fax: 1-631-938-8127

 45-1 Ramsey Road, Shirley, NY 11967, USA

concentration of 0.1-1.0 mg/mL. We recommend to add 5-50% of glycerol (final concentration) and aliquot for long-term storage at -20°C/-80°C.

AA Sequence

NKKKKPKKEEQKWKWWEERYPEGIKWKFLHKGPFVAPPYEPLPENVKFYDYG
 KVMKLSPKAAEEVATFFAKMLDHEYTTKEIFRKNFFKDWRKEMTNEEKNIITNLSKCDF
 TQMSQYFKAQTEARKQMSKEEKLKIKEENEKLLKEYGFCIMDNHKERIANFKIEPPGL
 FRGRGNHPKMGMLKRRIMPEDIIINCSKDAKVPSPPPGHKWKEVRHDNKVTWLVS
 WTENIQGSIKYIMLNPSSRIKGEKDWQKYETARRLKVCVDKIRNQYREDWKSKEMK
 VRQRAVALYFIDKLALRAGNEKEEGETADTVGCCSLRVEHINLHPELDGQEYVVEFD
 FLGKDSIRYYNKVPVEKRVFKNLQLFMENKQPEDDLFDRLNTGILNKHLQDLMEGLT
 AKVFRTYNASITLQQQLKELTAPDENIPAKILSYNRANRAVAILCNHQRAPPKTFEKS
 MMNLQTKIDAKKEQLADARRDLKSAKADAKVMKDAKTKKVVESKKAQVQRLEEQLM
 KLEVQATDREENKQIALGTSKLNYLDPRITVAWCKKWGVPIEKIYNKTQREKFAWAID
 MADEDYEF

GENE INFORMATION

Gene Name	TOP1 topoisomerase (DNA) I [Homo sapiens]
Official Symbol	TOP1
Synonyms	TOP1; topoisomerase (DNA) I; DNA topoisomerase 1; type I DNA topoisomerase; TOPI;
Gene ID	7150
mRNA Refseq	NM_003286
Protein Refseq	NP_003277
MIM	126420

 Tel: 1-631-559-9269 1-516-512-3133

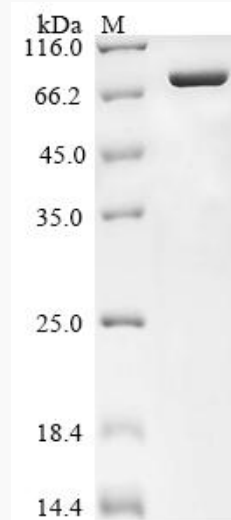
 Email: info@creative-biomart.com  Fax: 1-631-938-8127

 45-1 Ramsey Road, Shirley, NY 11967, USA

UniProt ID

P11387

SDS-PAGE



 Tel: 1-631-559-9269 1-516-512-3133

 Email: info@creative-biomart.com  Fax: 1-631-938-8127

 45-1 Ramsey Road, Shirley, NY 11967, USA