

## Recombinant Human TOP1 Protein, His-tagged

**Cat. No.** TOP1-445H    **Lot. No.** (See product label)

### SPECIFICATION

<b>Product Overview</b>	Recombinant Human TOP1(Met1~Ser250) fused with His tag at N-terminal was expressed in E. coli.
<b>Species</b>	Human
<b>Source</b>	E.coli
<b>ProteinLength</b>	Met1~Ser250
<b>Description</b>	This gene encodes a DNA topoisomerase, an enzyme that controls and alters the topologic states of DNA during transcription. This enzyme catalyzes the transient breaking and rejoining of a single strand of DNA which allows the strands to pass through one another, thus altering the topology of DNA. This gene is localized to chromosome 20 and has pseudogenes which reside on chromosomes 1 and 22.
<b>Form</b>	PBS, pH7.4, containing 0.01% SKL, 1mM DTT, 5% Trehalose and Proclin300.
<b>Molecular Mass</b>	34.0kDa
<b>Endotoxin</b>	<1.0EU per 1ug (determined by the LAL method)
<b>Purity</b>	> 95%
<b>Applications</b>	Positive Control; Immunogen; SDS-PAGE; WB. If bio-activity of the protein is needed, please check active protein

 Tel: 1-631-559-9269    1-516-512-3133

 Email: [info@creative-biomart.com](mailto:info@creative-biomart.com)     Fax: 1-631-938-8127

 45-1 Ramsey Road, Shirley, NY 11967, USA

**Stability** The thermal stability is described by the loss rate. The loss rate was determined by accelerated thermal degradation test, that is, incubate the protein at 37 centigrade for 48h, and no obvious degradation and precipitation were observed. The loss rate is less than 5% within the expiration date under appropriate storage condition.

**Storage** Avoid repeated freeze/thaw cycles. Store at 2-8 centigrade for one month. Aliquot and store at -80 centigrade for 12 months.

**Reconstitution** Reconstitute in PBS or others

## GENE INFORMATION

**Gene Name** [TOP1 topoisomerase \(DNA\) I \[ Homo sapiens \]](#)

**Official Symbol** [TOP1](#)

**Synonyms** TOP1; topoisomerase (DNA) I; DNA topoisomerase 1; type I DNA topoisomerase; TOPI;

**Gene ID** [7150](#)

**mRNA Refseq** [NM\\_003286](#)

**Protein Refseq** [NP\\_003277](#)

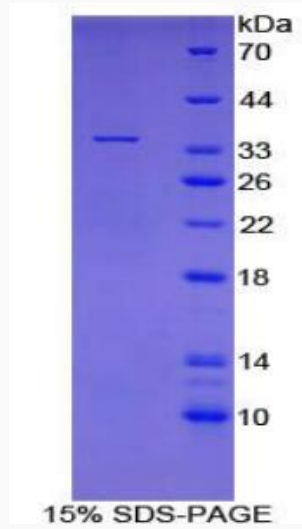
**MIM** [126420](#)

**UniProt ID** [P11387](#)

 Tel: 1-631-559-9269 1-516-512-3133

 Email: [info@creative-biomart.com](mailto:info@creative-biomart.com)  Fax: 1-631-938-8127

 45-1 Ramsey Road, Shirley, NY 11967, USA



Tel: 1-631-559-9269 1-516-512-3133

Email: [info@creative-biomart.com](mailto:info@creative-biomart.com) Fax: 1-631-938-8127

45-1 Ramsey Road, Shirley, NY 11967, USA