

Recombinant Human TOP2A Protein (Ile923-Arg1148), N-His tagged

Cat. No. TOP2A-6489H Lot. No. (See product label)

SPECIFICATION

Product Overview	Recombinant human TOP2A (Ile923-Arg1148) fused with the N-His tag was expressed in E. coli.
Species	Human
Source	E.coli
ProteinLength	Ile923-Arg1148
Form	Lyophilized powder/frozen liquid
Molecular Mass	28.81 kDa
Purity	> 90 % as determined by SDS-PAGE
Notes	For research use only.
Storage	Use a manual defrost freezer and avoid repeated freeze thaw cycles. Store at 2 to 8 centigrade for one week. Store at -20 to -80 centigrade for twelve months from the date of receipt.
Storage Buffer	0.01M PBS, pH 7.4, 0.02 % NLS
Reconstitution	Reconstitute in sterile water for a stock solution.

 Tel: 1-631-559-9269 1-516-512-3133

 Email: info@creative-biomart.com  Fax: 1-631-938-8127

 45-1 Ramsey Road, Shirley, NY 11967, USA

Shipping They are shipped out with dry ice/blue ice unless customers require otherwise.

GENE INFORMATION

Gene Name TOP2A topoisomerase (DNA) II alpha 170kDa [Homo sapiens (human)]

Official Symbol TOP2A

Synonyms TOP2A; topoisomerase (DNA) II alpha 170kDa; TOP2, topoisomerase (DNA) II alpha (170kD); DNA topoisomerase 2-alpha; DNA gyrase; DNA topoisomerase II, 170 kD; DNA topoisomerase (ATP-hydrolyzing); DNA topoisomerase II, alpha isozyme; TOP2; TP2A;

Gene ID 7153

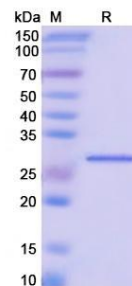
mRNA Refseq NM_001067

Protein Refseq NP_001058

MIM 126430

UniProt ID P11388

SDS-PAGE



 Tel: 1-631-559-9269 1-516-512-3133

 Email: info@creative-biomart.com  Fax: 1-631-938-8127

 45-1 Ramsey Road, Shirley, NY 11967, USA