

Recombinant Human TOP2B Protein, His-tagged

Cat. No. TOP2B-466H Lot. No. (See product label)

SPECIFICATION

Product Overview	Recombinant Human TOP2B Protein (Gly458-Asp667) with N-His tag was expressed in E. coli.
Species	Human
Source	E.coli
ProteinLength	Gly458-Asp667
Description	<p>This gene encodes a DNA topoisomerase, an enzyme that controls and alters the topologic states of DNA during transcription. This nuclear enzyme is involved in processes such as chromosome condensation, chromatid separation, and the relief of torsional stress that occurs during DNA transcription and replication. It catalyzes the transient breaking and rejoining of two strands of duplex DNA which allows the strands to pass through one another, thus altering the topology of DNA. Two forms of this enzyme exist as likely products of a gene duplication event. The gene encoding this form, beta, is localized to chromosome 3 and the alpha form is localized to chromosome 17. The gene encoding this enzyme functions as the target for several anticancer agents and a variety of mutations in this gene have been associated with the development of drug resistance. Reduced activity of this enzyme may also play a role in ataxia-telangiectasia. Alternative splicing results in multiple transcript variants.</p>
Form	Freeze-dried powder
Molecular Mass	Predicted Molecular Mass: 27.5 kDa

 Tel: 1-631-559-9269 1-516-512-3133

 Email: info@creative-biomart.com  Fax: 1-631-938-8127

 45-1 Ramsey Road, Shirley, NY 11967, USA

	Accurate Molecular Mass: 30 kDa
Purity	> 90%
Applications	Positive Control; Immunogen; SDS-PAGE; WB.
Stability	The thermal stability is described by the loss rate. The loss rate was determined by accelerated thermal degradation test, that is, incubate the protein at 37 centigrade for 48h, and no obvious degradation and precipitation were observed. The loss rate is less than 5% within the expiration date under appropriate storage condition.
Storage	Avoid repeated freeze/thaw cycles. Store at 2-8 centigrade for one month. Aliquot and store at -80 centigrade for 12 months.
Storage Buffer	PBS, pH7.4, containing 0.01% SKL, 1 mM DTT, 5% Trehalose and Proclin300.
Reconstitution	Reconstitute in sterile water to a concentration of 0.1-1.0 mg/mL. Do not vortex.
GENE INFORMATION	
Gene Name	TOP2B topoisomerase (DNA) II beta 180kDa [Homo sapiens (human)]
Official Symbol	TOP2B
Synonyms	TOP2B; topoisomerase (DNA) II beta 180kDa; topoisomerase (DNA) II beta (180kD); DNA topoisomerase 2-beta; topo II beta; antigen MLAA-44; topoisomerase IIb; topoisomerase II beta; U937 associated antigen; DNA topoisomerase II beta; DNA topoisomerase II, 180 kD; DNA topoisomerase II, beta isozyme; TOPIIB; top2beta
Gene ID	7155

 Tel: 1-631-559-9269 1-516-512-3133

 Email: info@creative-biomart.com  Fax: 1-631-938-8127

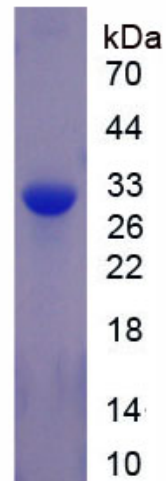
 45-1 Ramsey Road, Shirley, NY 11967, USA

mRNA Refseq [NM_001068](#)

Protein Refseq [NP_001059](#)

MIM [126431](#)

UniProt ID [Q02880](#)



 Tel: 1-631-559-9269 1-516-512-3133

 Email: info@creative-biomart.com  Fax: 1-631-938-8127

 45-1 Ramsey Road, Shirley, NY 11967, USA