

Recombinant Human TOP3B protein, His & T7-tagged

Cat. No. TOP3B-8247H Lot. No. (See product label)

SPECIFICATION

| | |
|-------------------------|---|
| Product Overview | Recombinant Human TOP3B aa. (Met1~Asp250 (Accession # O95985)) fused with N-terminal His & T7 tag was produced in E. coli cells. |
| Species | Human |
| Source | E.coli |
| ProteinLength | Met1~Asp250 |
| Form | Freeze-dried powder |
| Molecular Mass | Predicted Molecular Mass: 31.6kDa. |
| Endotoxin | <1.0EU per 1ug (determined by the LAL method) |
| Purity | >90% |
| Characteristic | The isoelectric point is 6.3. |
| Applications | SDS-PAGE; WB; ELISA; IP. |
| Stability | The thermal stability is described by the loss rate of the target protein. The loss rate was determined by accelerated thermal degradation test, that is, incubate the protein at 37°C for 48h, and no obvious degradation and precipitation were observed. (Referring from China Biological Products Standard, which was calculated by the |

 Tel: 1-631-559-9269 1-516-512-3133

 Email: info@creative-biomart.com  Fax: 1-631-938-8127

 45-1 Ramsey Road, Shirley, NY 11967, USA

Arrhenius equation.) The loss of this protein is less than 5% within the expiration date under appropriate storage condition.

Storage

Avoid repeated freeze/thaw cycles. Store at 2-8°C for one month. Aliquot and store at -80°C for 12 months.

Storage Buffer

Supplied as lyophilized form in 20mM Tris, 150mM NaCl, pH8.0, containing 1mM EDTA, 1mM DTT, 0.01% sarcosyl, 5% trehalose, and preservative.

Reconstitution

Reconstitute in sterile ddH₂O.

GENE INFORMATION

Gene Name

TOP3B DNA topoisomerase III beta [Homo sapiens (human)]

Official Symbol

TOP3B

Synonyms

TOP3B; DNA topoisomerase III beta; TOP3B1; DNA topoisomerase 3-beta-1; DNA topoisomerase III beta-1; topoisomerase (DNA) III beta; topoisomerase III beta

Gene ID

8940

mRNA Refseq

NM_001282112.1

Protein Refseq

NP_001269041.1

UniProt ID

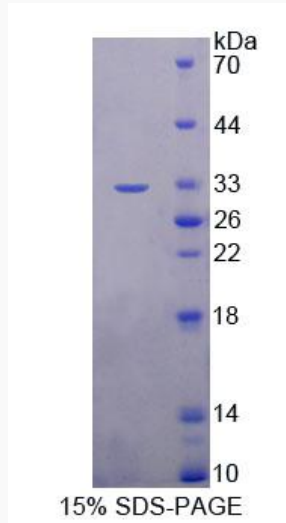
O95985

 Tel: 1-631-559-9269 1-516-512-3133

 Email: info@creative-biomart.com  Fax: 1-631-938-8127

 45-1 Ramsey Road, Shirley, NY 11967, USA

SDS-PAGE



 Tel: 1-631-559-9269 1-516-512-3133

 Email: info@creative-biomart.com  Fax: 1-631-938-8127

 45-1 Ramsey Road, Shirley, NY 11967, USA