

Recombinant Human DNA topoisomerase II binding protein 1 Protein, His tagged

Cat. No. TOPBP1-100H Lot. No. (See product label)

SPECIFICATION

Product Overview	Recombinant human TOPBP1 protein (Q92547) (Thr 1259-His 1522) with a His tag at the C-terminus was expressed in E. coli.
Species	Human
Source	E.coli
ProteinLength	1259-1522aa
Description	Required for DNA replication. Plays a role in the rescue of stalled replication forks and checkpoint control. Binds double-stranded DNA breaks and nicks as well as single-stranded DNA. Recruits the SWI/SNF chromatin remodeling complex to E2F1-responsive promoters. Down-regulates E2F1 activity and inhibits E2F1-dependent apoptosis during G1/S transition and after DNA damage. Induces a large increase in the kinase activity of ATR.
Tag	C-His
Molecular Mass	31.6 kDa
Endotoxin	Less than 1.0 EU/μg by the LAL method.
Purity	>95% as determined by SDS-PAGE.

 Tel: 1-631-559-9269 1-516-512-3133

 Email: info@creative-biomart.com  Fax: 1-631-938-8127

 45-1 Ramsey Road, Shirley, NY 11967, USA

Storage Please avoid repeated freeze-thaw cycles. Samples are stable for up to twelve months from date of receipt at -20 to -80 centigrade. It is recommended that aliquot the reconstituted solution to minimize freeze-thaw cycles.

Storage Buffer Lyophilized from a 0.2 µm filtered solution of PBS, pH7.4, 5% Trehalose, 5% mannitol.

Reconstitution Reconstitute at 250 µg/mL in sterile water.

GENE INFORMATION

Gene Name TOPBP1 DNA topoisomerase II binding protein 1 [Homo sapiens (human)]

Official Symbol TOPBP1

Synonyms TOPBP1; topoisomerase (DNA) II binding protein 1; DNA topoisomerase 2-binding protein 1; KIAA0259; TOP2BP1; DNA topoisomerase II-binding protein 1; DNA topoisomerase II-beta-binding protein 1;

Gene ID 11073

mRNA Refseq NM_007027

Protein Refseq NP_008958

MIM 607760

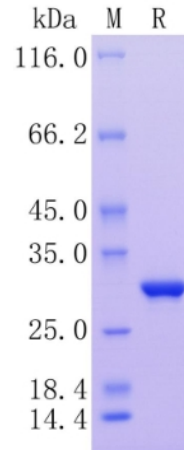
UniProt ID Q92547

 Tel: 1-631-559-9269 1-516-512-3133

 Email: info@creative-biomart.com  Fax: 1-631-938-8127

 45-1 Ramsey Road, Shirley, NY 11967, USA

**Protein on SDS-
PAGE under
reducing (R)
condition.**



 Tel: 1-631-559-9269 1-516-512-3133

 Email: info@creative-biomart.com  Fax: 1-631-938-8127

 45-1 Ramsey Road, Shirley, NY 11967, USA