

Recombinant Human TOPBP1 Protein, His tagged

Cat. No. TOPBP1-32H Lot. No. (See product label)

SPECIFICATION

Product Overview	Purified recombinant protein of Human topoisomerase (DNA) II binding protein 1 (TOPBP1), Lys892-Asp1146, with N-terminal His tag, expressed in E. coli.
Species	Human
Source	E.coli
ProteinLength	892-1146 aa
Description	This gene encodes a binding protein which interacts with the C-terminal region of topoisomerase II beta. This interaction suggests a supportive role for this protein in the catalytic reactions of topoisomerase II beta through transient breakages of DNA strands.
Molecular Weight	28.5 kDa
Purity	> 80% as determined by SDS-PAGE and Coomassie blue staining
Notes	For testing in cell culture applications, please filter before use. Note that you may experience some loss of protein during the filtration process.
Stability	Stable for 12 months from the date of receipt of the product under proper storage and handling conditions. Avoid repeated freeze-thaw cycles.
Storage	Store at -80 centigrade after receiving vials.

 Tel: 1-631-559-9269 1-516-512-3133

 Email: info@creative-biomart.com  Fax: 1-631-938-8127

 45-1 Ramsey Road, Shirley, NY 11967, USA

Storage Buffer 50 mM Tris-HCl, pH 8.0, 8 M urea

Reconstitution >0.05 µg/µL as determined by microplate BCA method

GENE INFORMATION

Gene Name TOPBP1 DNA topoisomerase II binding protein 1 [Homo sapiens (human)]

Official Symbol TOPBP1

Synonyms TOPBP1; topoisomerase (DNA) II binding protein 1; DNA topoisomerase 2-binding protein 1; KIAA0259; TOP2BP1; DNA topoisomerase II-binding protein 1; DNA topoisomerase II-beta-binding protein 1

Gene ID 11073

mRNA Refseq NM_007027

Protein Refseq NP_008958

MIM 607760

UniProt ID Q92547

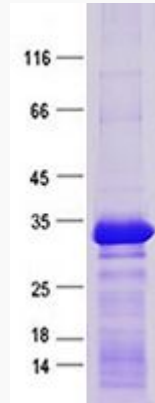
 Tel: 1-631-559-9269 1-516-512-3133

 Email: info@creative-biomart.com  Fax: 1-631-938-8127

 45-1 Ramsey Road, Shirley, NY 11967, USA



SDS-PAGE



Tel: 1-631-559-9269 1-516-512-3133

Email: info@creative-biomart.com Fax: 1-631-938-8127

45-1 Ramsey Road, Shirley, NY 11967, USA