

Recombinant Human TOPBP1 Protein, GST tagged

Cat. No. TOPBP1-33H Lot. No. (See product label)

SPECIFICATION

Product Overview	Human TOPBP1 partial ORF (NP_008958, 1327 a.a. - 1435 a.a.) recombinant protein with GST-tag at N-terminal was expressed in Wheat Germ (in vitro).
Species	Human
Source	Wheat Germ
ProteinLength	1327-1435 aa
Description	This gene encodes a binding protein which interacts with the C-terminal region of topoisomerase II beta. This interaction suggests a supportive role for this protein in the catalytic reactions of topoisomerase II beta through transient breakages of DNA strands.
Molecular Weight	37.73 kDa
AA Sequence	LLQSGGAKVLPGHSVPLFKEATHLFSDLNKLKPDDSGVNIAEAAAQNVYCLRTEYIA DYLMQESPPHVENYCLPEAISFIQNNKELGTGLSQKRKAPTEKNKIKRPRVH
Quality Control Testing	12.5% SDS-PAGE Stained with Coomassie Blue.
Applications	Enzyme-linked Immunoabsorbent Assay Western Blot (Recombinant protein) Antibody Production Protein Array

 Tel: 1-631-559-9269 1-516-512-3133

 Email: info@creative-biomart.com  Fax: 1-631-938-8127

 45-1 Ramsey Road, Shirley, NY 11967, USA

Notes	Best use within three months from the date of receipt of this protein.
Storage	Store at -80 centigrade. Aliquot to avoid repeated freezing and thawing.
Storage Buffer	50 mM Tris-HCl, 10 mM reduced Glutathione, pH=8.0 in the elution buffer.

GENE INFORMATION

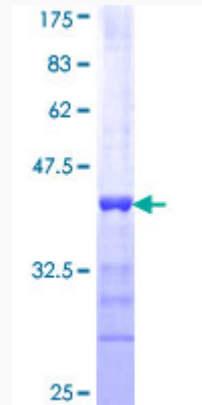
Gene Name	TOPBP1 DNA topoisomerase II binding protein 1 [Homo sapiens (human)]
Official Symbol	TOPBP1
Synonyms	TOPBP1; topoisomerase (DNA) II binding protein 1; DNA topoisomerase 2-binding protein 1; KIAA0259; TOP2BP1; DNA topoisomerase II-binding protein 1; DNA topoisomerase II-beta-binding protein 1
Gene ID	11073
mRNA Refseq	NM_007027
Protein Refseq	NP_008958
MIM	607760
UniProt ID	Q92547

 Tel: 1-631-559-9269 1-516-512-3133

 Email: info@creative-biomart.com  Fax: 1-631-938-8127

 45-1 Ramsey Road, Shirley, NY 11967, USA

SDS-PAGE



 Tel: 1-631-559-9269 1-516-512-3133

 Email: info@creative-biomart.com  Fax: 1-631-938-8127

 45-1 Ramsey Road, Shirley, NY 11967, USA