

## Recombinant Human TOR1AIP1 protein, His-tagged

Cat. No. TOR1AIP1-6744H Lot. No. (See product label)

### SPECIFICATION

<b>Product Overview</b>	Recombinant Human TOR1AIP1 protein(1-218 aa), fused with N-terminal His tag, was expressed in E.coli.
<b>Species</b>	Human
<b>Source</b>	E.coli
<b>ProteinLength</b>	1-218 aa
<b>Form</b>	The purified protein was lyophilized from sterile phosphate-buffered saline (PBS: 58 mM Na <sub>2</sub> HPO <sub>4</sub> , 17 mM NaH <sub>2</sub> PO <sub>4</sub> , 68 mM NaCl, pH 7.4). Prior to lyophilization, 5% (w/v) trehalose and 5% (w/v) mannitol were incorporated as cryoprotective excipients. The protein was eluted with a buffer containing 300 mM imidazole.
<b>AASequence</b>	MKTRRTRRLQQQHSEQPPLQPSPVTTRRGLRDSHSSEEDEASSQTDLSQTISKKTV RSIQEAPVSEDLVIRLRRPPLRYPRYEATSVQQKVNFSSEGETEEDDQDSSHSSVTT VKARSRDSDESGDKTTRSSSQYIESFWQSSQSQNFTAHDKQRSVLSSGYQKTPQE WAPQTARIRTRMQNDSILKSELGNQSPSTSSRQVTGQPQNASFVKRNRWW
<b>Purity</b>	90%, by SDS-PAGE with Coomassie Brilliant Blue staining.
<b>Storage</b>	Store at 2-8°C for 1-2 weeks. Aliquot and store at -20°C to -80°C for up to 3 months, reconstitution with sterile water and addition of an equal volume of glycerol. Avoid repeat freeze-thaw cycles.

 Tel: 1-631-559-9269 1-516-512-3133

 Email: [info@creative-biomart.com](mailto:info@creative-biomart.com)  Fax: 1-631-938-8127

 45-1 Ramsey Road, Shirley, NY 11967, USA

**Reconstitution**

Dissolve the product in 200 µl sterile water to achieve a working concentration of 0.25 g/µl. If experimental compatibility allows, mix the aqueous solution with an equal volume of glycerol (1:1 ratio) after initial reconstitution.

**GENE INFORMATION****Gene Name**

TOR1AIP1 torsin A interacting protein 1 [ Homo sapiens ]

**Official Symbol**

TOR1AIP1

**Synonyms**

TOR1AIP1; torsin A interacting protein 1; torsin-1A-interacting protein 1; FLJ13142; lamina associated polypeptide 1B; LAP1B; lamin-associated protein 1B; lamina-associated polypeptide 1B; LAP1; MGC3413; RP11-533E19.1; DKFZp586G011;

**Gene ID**

26092

**mRNA Refseq**

NM\_015602

**Protein Refseq**

NP\_056417

**MIM**

614512

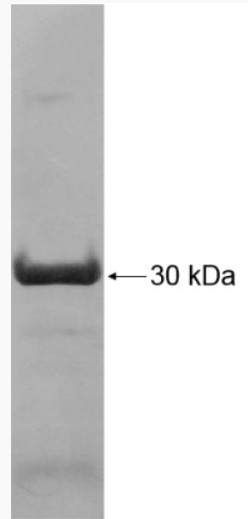
**UniProt ID**

Q5JTV8

 Tel: 1-631-559-9269 1-516-512-3133 Email: [info@creative-biomart.com](mailto:info@creative-biomart.com)  Fax: 1-631-938-8127 45-1 Ramsey Road, Shirley, NY 11967, USA



SDS-PAGE



Tel: 1-631-559-9269 1-516-512-3133

Email: [info@creative-biomart.com](mailto:info@creative-biomart.com) Fax: 1-631-938-8127

45-1 Ramsey Road, Shirley, NY 11967, USA