

Recombinant Human TOR1AIP2 Protein, Myc/DDK-tagged, C13 and N15-labeled

Cat. No. TOR1AIP2-683H Lot. No. (See product label)

SPECIFICATION

Product Overview	TOR1AIP2 MS Standard C13 and N15-labeled recombinant protein (NP_659471) with a C-terminal MYC/DDK tag, was expressed in HEK293 cells.
Species	Human
Source	HEK293
Description	One of the two protein isoforms encoded by this gene is a type II integral membrane protein found in the endoplasmic reticulum (ER). The encoded protein is a cofactor for the ATPase TorsinA, regulating the amount of TorsinA present in the ER compared to that found in the nuclear envelope. Defects in this protein are a cause of early onset primary dystonia, a neuromuscular disease. The other isoform encoded by this gene is an interferon alpha responsive protein whose cellular role has yet to be determined.
Molecular Mass	51.3 kDa
AA Sequence	MADSGGLREPQEDSQKDLNDPSVNSQAQETTIIASNAEEAEILHSACGLSKDHQVEVE TEGPESADTGDKSESPDEANVGKHPKDKTEDEKQSFLLDGGKGGHLLPSENGLKPEP LDPDPSHSPSKVGRADAHLGSSSVALPKEASDGTGASQEPPTTDSQEAQSPGHS SAGQEGEDTLRRRLLAPEAGSHPQQTQKLEEIKENAQDTMRQINKKGFWSYGPVIL VVLVVAVVASSVNSYYSSPAQQVPKNPALEAFLAQFSQLEDKFPQGSSFLWQRGRK FLQKHLNASNPTEPATIIFTAAREGRETLKCLSHHVADAYTSSQKVSPIQIDGAGRTW QDSDTVKLLVDLELSYGFENGQKAAVVHHFESFPAGSTLIFYKYCDHENAAFKDVAL

 Tel: 1-631-559-9269 1-516-512-3133

 Email: info@creative-biomart.com  Fax: 1-631-938-8127

 45-1 Ramsey Road, Shirley, NY 11967, USA

VLTVLLEEETLEASVGPRETTEEKVRDLLWAKFTNSDTPTSFNHMDSKLSGLWSRIS
HLVLPVQPVSSIEEQGCLFTRTRPLEQKLISEEDLAANDILDYKDDDDKV

Purity > 80% as determined by SDS-PAGE and Coomassie blue staining

Stability Stable for 3 months from receipt of products under proper storage and handling conditions.

Storage Store at -80 centigrade. Avoid repeated freeze-thaw cycles.

Concentration 50 µg/mL as determined by BCA

Storage Buffer 100 mM glycine, 25 mM Tris-HCl, pH 7.3.

GENE INFORMATION

Gene Name TOR1AIP2 torsin 1A interacting protein 2 [Homo sapiens (human)]

Official Symbol TOR1AIP2

Synonyms TOR1AIP2; torsin 1A interacting protein 2; NET9; LULL1; IFRG15; torsin-1A-interacting protein 2; interferon alpha responsive protein; 15 kDa interferon-responsive protein; interferon responsive gene 15; luminal domain like LAP1; torsin A interacting protein 2

Gene ID 163590

mRNA Refseq NM_145034

Protein Refseq NP_659471

 Tel: 1-631-559-9269 1-516-512-3133

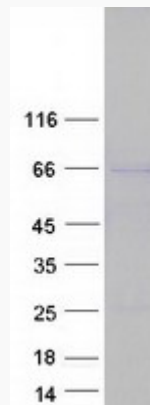
 Email: info@creative-biomart.com  Fax: 1-631-938-8127

 45-1 Ramsey Road, Shirley, NY 11967, USA

MIM 614513

UniProt ID Q8NFAQ

SDS-PAGE



 Tel: 1-631-559-9269 1-516-512-3133

 Email: info@creative-biomart.com  Fax: 1-631-938-8127

 45-1 Ramsey Road, Shirley, NY 11967, USA