

Recombinant Human TOR1B Protein, Myc/DDK-tagged, C13 and N15-labeled

Cat. No. TOR1B-4734H Lot. No. (See product label)

SPECIFICATION

Product Overview	TOR1B MS Standard C13 and N15-labeled recombinant protein (NP_055321) with a C-terminal MYC/DDK tag, was expressed in HEK293 cells.
Species	Human
Source	HEK293
Description	The protein encoded by this gene is an ATPase found primarily in the endoplasmic reticulum and nuclear envelope. This gene has a highly-similar neighboring gene, TOR1A, that encodes a protein that is likely to interact in a complex with this protein. Finally, this protein may act as a chaperone and play a role in maintaining the integrity of the nuclear envelope and endoplasmic reticulum. Several transcript variants, some protein-coding and others non-protein coding, have been found for this gene.
Molecular Mass	38 kDa
AA Sequence	MLRAGWLRGAAALALLLAARVVAAFEPITVGLAIGAASAITGYLSYNDIYCRFAECCR EERPLNASALKLDLEEKLFQHLATEVIFKALTGFRNKNPKKPLTSLHGWAGTGK NFVSQLVAENLHPKGLKSNFVHLFVSTLHFPHEQKIKLYQDQLQKWIRGNVSACANS VFIFDEMDKLHPGIIDAIPFLDYEQVDGVSRYKAIFIFLSNAGGDLITKTALDFWRAG RKREDIQLKDLEPVLVSVGVFNKHSGLWHSLIDKNLIDYFIPFLPLEYRHHVKMCVRA EMRARGSAIDEDIVTRVAEEMTFFPRDEKIYSDKGCKTVQSRLDFHTRTRPLEQKLIS

 Tel: 1-631-559-9269 1-516-512-3133

 Email: info@creative-biomart.com  Fax: 1-631-938-8127

 45-1 Ramsey Road, Shirley, NY 11967, USA

EEDLAANDILDYKDDDDKV

Purity > 80% as determined by SDS-PAGE and Coomassie blue staining

Stability Stable for 3 months from receipt of products under proper storage and handling conditions.

Storage Store at -80 centigrade. Avoid repeated freeze-thaw cycles.

Concentration 50 µg/mL as determined by BCA

Storage Buffer 100 mM glycine, 25 mM Tris-HCl, pH 7.3.

GENE INFORMATION

Gene Name TOR1B torsin family 1 member B [Homo sapiens (human)]

Official Symbol TOR1B

Synonyms TOR1B; torsin family 1, member B (torsin B); torsin-1B; DQ1; MGC4386; torsin family 1 member B;

Gene ID 27348

mRNA Refseq NM_014506

Protein Refseq NP_055321

MIM 608050

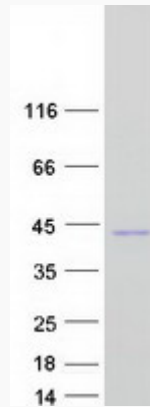
UniProt ID O14657

 Tel: 1-631-559-9269 1-516-512-3133

 Email: info@creative-biomart.com  Fax: 1-631-938-8127

 45-1 Ramsey Road, Shirley, NY 11967, USA

SDS-PAGE



 Tel: 1-631-559-9269 1-516-512-3133

 Email: info@creative-biomart.com  Fax: 1-631-938-8127

 45-1 Ramsey Road, Shirley, NY 11967, USA