

Recombinant Human TOR2A protein, His & T7-tagged

Cat. No. TOR2A-1314H Lot. No. (See product label)

SPECIFICATION

Product Overview	Recombinant Human TOR2A aa. (Leu49~Ile248 (Accession # Q5JU69) fused with N-terminal His & T7 tag was produced in E. coli cells.
Species	Human
Source	E.coli
ProteinLength	Leu49~Ile248
Description	This gene encodes a member of the AAA family of adenosine triphosphatases with similarity to Clp proteases and heat shock proteins. Alternative splicing at this locus results in the translation of multiple isoforms of the encoded protein, some of which contain salusin peptides in the C-terminal region. These peptides may play roles in hypotension, myocardial growth and the induction of mitogenesis, and may also be involved in the pathogenesis of atherosclerosis. The antimicrobial peptide salusin-beta has antibacterial activity.
Form	Freeze-dried powder
Molecular Mass	Predicted Molecular Mass: 26.3kDa.
Endotoxin	<1.0EU per 1g (determined by the LAL method)
Purity	>95%

 Tel: 1-631-559-9269 1-516-512-3133

 Email: info@creative-biomart.com  Fax: 1-631-938-8127

 45-1 Ramsey Road, Shirley, NY 11967, USA

Characteristic	The isoelectric point is 9.7.
Applications	SDS-PAGE; WB; ELISA; IP.
Stability	The thermal stability is described by the loss rate of the target protein. The loss rate was determined by accelerated thermal degradation test, that is, incubate the protein at 37°C for 48h, and no obvious degradation and precipitation were observed. (Referring from China Biological Products Standard, which was calculated by the Arrhenius equation.) The loss of this protein is less than 5% within the expiration date under appropriate storage condition.
Storage	Avoid repeated freeze/thaw cycles. Store at 2-8°C for one month. Aliquot and store at -80°C for 12 months.
Storage buffer	Supplied as lyophilized form in PBS, pH7.4, containing 5% sucrose, 0.01% sarcosyl.
Reconstitution	Reconstitute in sterile PBS, pH7.2-pH7.4.

GENE INFORMATION

Gene Name	TOR2A torsin family 2 member A [Homo sapiens (human)]
Official Symbol	TOR2A
Synonyms	TOR2A; torsin family 2 member A; TORP1; prosalusin; salusin-beta; torsin-2A; torsin-related protein 1
Gene ID	27433
mRNA Refseq	NM_001085347.2

 Tel: 1-631-559-9269 1-516-512-3133

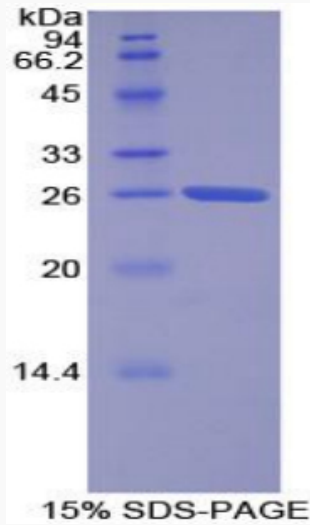
 Email: info@creative-biomart.com  Fax: 1-631-938-8127

 45-1 Ramsey Road, Shirley, NY 11967, USA

Protein Refseq NP_001078816.1

UniProt ID Q5JU69

SDS-PAGE



 Tel: 1-631-559-9269 1-516-512-3133

 Email: info@creative-biomart.com  Fax: 1-631-938-8127

 45-1 Ramsey Road, Shirley, NY 11967, USA