

Recombinant Human TP53INP1 protein, His-tagged

Cat. No. TP53INP1-7854H **Lot. No.** (See product label)

SPECIFICATION

Product Overview	Recombinant Human TP53INP1 protein(1-240 aa), fused with N-terminal His tag, was expressed in E.coli.
Species	Human
Source	E.coli
ProteinLength	1-240 aa
Form	The purified protein was lyophilized from sterile phosphate-buffered saline (PBS: 58 mM Na ₂ HPO ₄ , 17 mM NaH ₂ PO ₄ , 68 mM NaCl, pH 7.4). Prior to lyophilization, 5% (w/v) trehalose and 5% (w/v) mannitol were incorporated as cryoprotective excipients.
AASequence	MFQRLNKMFGVGEVSSSSNQEPFNEKEDDEWILVDFIDTCTGFSAEEEEEEEDISEE SPTHEPSVFSCLPASLECLADTSDSCFLQFESCPMEESWFITPPPCFTAGGLTTIKVE TSPMENLLIEHPSMSVYAVHNSCPGLSEATRGTDELHSPSSPRVEAQNEMGQHIHC YVAALAAHTTFLEQPKSFRPSQWIKEHSERQPLNRNSLRRQNLTRDCHPRQVKHNG WVVHQPCPRQYNY
Purity	85%, by SDS-PAGE with Coomassie Brilliant Blue staining.
Storage	Store at 2-8°C for 1-2 weeks. Aliquot and store at -20°C to -80°C for up to 3 months, reconstitution with sterile water and addition of an equal volume of glycerol. Avoid repeat freeze-thaw cycles.

 Tel: 1-631-559-9269 1-516-512-3133

 Email: info@creative-biomart.com  Fax: 1-631-938-8127

 45-1 Ramsey Road, Shirley, NY 11967, USA

Reconstitution

Dissolve the product in 200 µl sterile water to achieve a working concentration of 0.25 g/µl. If experimental compatibility allows, mix the aqueous solution with an equal volume of glycerol (1:1 ratio) after initial reconstitution.

GENE INFORMATION

Gene Name TP53INP1 tumor protein p53 inducible nuclear protein 1 [Homo sapiens]

Official Symbol TP53INP1

Synonyms

TP53INP1; tumor protein p53 inducible nuclear protein 1; tumor protein p53-inducible nuclear protein 1; DKFZp434M1317; FLJ22139; P53DINP1; SIP; Teap; TP53INP1A; TP53INP1B; p53-inducible p53DINP1; stress-induced protein; p53-dependent damage-inducible nuclear protein 1; p53DINP1; TP53DINP1;

Gene ID 94241

mRNA Refseq NM_001135733

Protein Refseq NP_001129205

MIM 606185

UniProt ID Q96A56

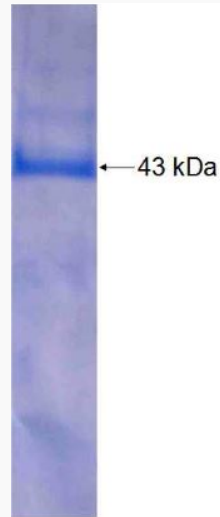
 Tel: 1-631-559-9269 1-516-512-3133

 Email: info@creative-biomart.com  Fax: 1-631-938-8127

 45-1 Ramsey Road, Shirley, NY 11967, USA



SDS-PAGE



☎ Tel: 1-631-559-9269 1-516-512-3133

☎ Email: info@creative-biomart.com ☎ Fax: 1-631-938-8127

☎ 45-1 Ramsey Road, Shirley, NY 11967, USA