

Recombinant Human TPBG Protein, MYC/DDK-tagged, C13 and N15-labeled

Cat. No. TPBG-271H Lot. No. (See product label)

SPECIFICATION

Product Overview	TPBG MS Standard C13 and N15-labeled recombinant protein (NP_006661) with a C-terminal MYC/DDK tag, was expressed in HEK293 cells.
Species	Human
Source	HEK293
Description	This gene encodes a leucine-rich transmembrane glycoprotein that may be involved in cell adhesion. The encoded protein is an oncofetal antigen that is specific to trophoblast cells. In adults this protein is highly expressed in many tumor cells and is associated with poor clinical outcome in numerous cancers. Alternate splicing in the 5' UTR results in multiple transcript variants that encode the same protein. [provided by RefSeq, Oct 2009]
Molecular Mass	45.9 kDa
AA Sequence	<pre> MPGGCSRGAAGDGRLRLARLALVLLGWVSSSSPTSSASSFSSSAPFLASAVSAQP PLPDQCPALCECSEAARTVKCVNRNLTEVPTDLPAYVRNLFLLTGNQLAVLPAGAFAR RPPLAELAALNLSGSRLDEVRAFAFEHLPSLRQLDLSHNPLADLSPFAFSGSNASVS APSPLEVELLNHIVPPEDERQNRSFEGMVVAALLAGRALQGLRRLASNHFLYLPRD VLAQLPSLRHLDLSNNSLVSLTYVSFRNLTHLES LHLEDNALKVLHNGTLAELQGLPH IRVFLDNNPWVCDCHMADMVTWLKETEVVQGKDRLTCAYPEKMRNRVLELNSAD LDCDPILPPSLQTSYVFLGIVLALIGAIFLLVLYLNRKGIKKWMHNIRDACRDHMEGYH </pre>

Tel: 1-631-559-9269 1-516-512-3133

Email: info@creative-biomart.com Fax: 1-631-938-8127

45-1 Ramsey Road, Shirley, NY 11967, USA

YRYEINADPRLTNLSSNSDVTRTRPLEQKLISEEDLAANDILDYKDDDDKV

Purity > 80% as determined by SDS-PAGE and Coomassie blue staining

Stability Stable for 3 months from receipt of products under proper storage and handling conditions.

Storage Store at -80 centigrade. Avoid repeated freeze-thaw cycles.

Concentration 50 µg/mL as determined by BCA

Storage Buffer 100 mM glycine, 25 mM Tris-HCl, pH 7.3.

GENE INFORMATION

Gene Name TPBG trophoblast glycoprotein [Homo sapiens (human)]

Official Symbol TPBG

Synonyms TPBG; trophoblast glycoprotein; 5T4; 5T4 AG; 5T4 oncofetal antigen; 5T4 oncotrophoblast glycoprotein; 5T4 oncofetal trophoblast glycoprotein; M6P1; 5T4AG;

Gene ID 7162

mRNA Refseq NM_006670

Protein Refseq NP_006661

MIM 190920

UniProt ID Q13641

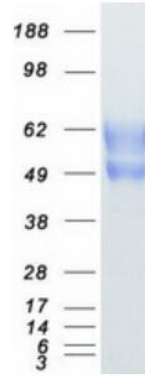
 Tel: 1-631-559-9269 1-516-512-3133

 Email: info@creative-biomart.com  Fax: 1-631-938-8127

 45-1 Ramsey Road, Shirley, NY 11967, USA



SDS-PAGE



Tel: 1-631-559-9269 1-516-512-3133

Email: info@creative-biomart.com Fax: 1-631-938-8127

45-1 Ramsey Road, Shirley, NY 11967, USA