

## Recombinant Human TPBG protein, His-tagged

Cat. No. TPBG-4464H Lot. No. (See product label)

### SPECIFICATION

<b>Product Overview</b>	Recombinant Human TPBG protein(Q13641)(32-355aa), fused with N-terminal His tag, was expressed in HEK293.
<b>Species</b>	Human
<b>Source</b>	HEK293
<b>ProteinLength</b>	32-355aa
<b>Tag</b>	N-His
<b>Form</b>	Lyophilized from a 0.2 µm filtered 20 mM Tris-HCl, 0.5 M NaCl, 6% Trehalose, pH 8.0
<b>Bio-activity</b>	Measured by its binding ability in a functional ELISA. Immobilized Human TPBG at 2 µg/mL can bind Anti-TPBG recombinant antibody, the EC50 is 1.230-1.519 ng/mL.
<b>Molecular Mass</b>	38.9 kDa
<b>Endotoxin</b>	Less than 1.0 EU/ug as determined by LAL method.
<b>Purity</b>	Greater than 95% as determined by SDS-PAGE.
<b>Storage</b>	Store at -20°C/-80°C upon receipt, aliquoting is necessary for mutiple use. Avoid repeated freeze-thaw cycles.

 Tel: 1-631-559-9269 1-516-512-3133

 Email: [info@creative-biomart.com](mailto:info@creative-biomart.com)  Fax: 1-631-938-8127

 45-1 Ramsey Road, Shirley, NY 11967, USA

**Reconstitution**

We recommend that this vial be briefly centrifuged prior to opening to bring the contents to the bottom. Please reconstitute protein in deionized sterile water to a concentration of 0.1-1.0 mg/mL. We recommend to add 5-50% of glycerol (final concentration) and aliquot for long-term storage at -20°C/-80°C.

**AA Sequence**

SSPTSSASSFSSSAPFLASAVSAQPPLPDQCPALCECSEAARTVKCVNRNLTEVPTD  
 LPAYVRNLFLTGNQLAVLPAGAFARRPPLAELAALNLSGSRLDEV RAGAFEHLPSLR  
 QLDLSHNPLADLSPFAFSGSNASVSAPSPLVELILNHIVPPEDERQNRSFEGMVVAA  
 LLAGRALQGLRRLELASNHFLYLPRDVLAQLPSLRHLDLSNNSLVSLTYVSFRNLTHL  
 ESLHLEDNALKVLHNGTLAELQGLPHIRVFLDNNPWVCDCHMADMVTWLKETEVVQ  
 GKDR LTCAYPEKMRNRVLELNSADLDCDPILPPSLQTS

## GENE INFORMATION

**Gene Name**

TPBG trophoblast glycoprotein [ Homo sapiens ]

**Official Symbol**

TPBG

**Synonyms**

TPBG; trophoblast glycoprotein; 5T4; 5T4 AG; 5T4 oncofetal antigen; 5T4 oncotrophoblast glycoprotein; 5T4 oncofetal trophoblast glycoprotein; M6P1; 5T4AG;

**Gene ID**

7162

**mRNA Refseq**

NM\_001166392

**Protein Refseq**

NP\_001159864

**MIM**

190920

**UniProt ID**

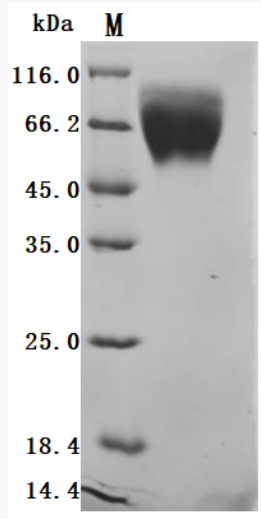
Q13641

 Tel: 1-631-559-9269 1-516-512-3133

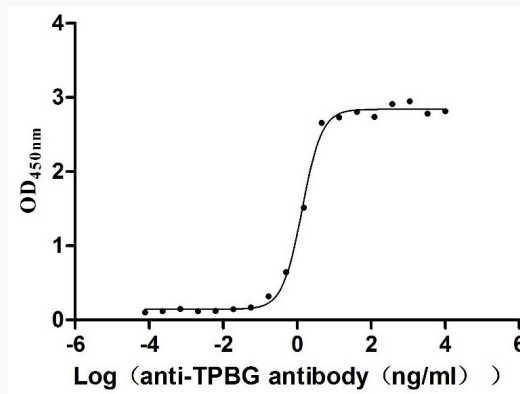
 Email: [info@creative-biomart.com](mailto:info@creative-biomart.com)  Fax: 1-631-938-8127

 45-1 Ramsey Road, Shirley, NY 11967, USA

**SDS-PAGE**



**Activity**



 Tel: 1-631-559-9269 1-516-512-3133

 Email: [info@creative-biomart.com](mailto:info@creative-biomart.com)  Fax: 1-631-938-8127

 45-1 Ramsey Road, Shirley, NY 11967, USA