

## Recombinant Human TPBG protein, His-Avi-tagged, FITC-Labeled

**Cat. No.** TPBG-5643H    **Lot. No.** (See product label)

### SPECIFICATION

<b>Product Overview</b>	FITC-Labeled Recombinant Human TPBG protein(Q13641-1)(Ser32-Ser355), fused with C-terminal His and Avi tag, was expressed in HEK293.
<b>Species</b>	Human
<b>Source</b>	HEK293
<b>ProteinLength</b>	Ser32-Ser355
<b>Tag</b>	C-His-Avi
<b>Conjugation/Label</b>	FITC
<b>Form</b>	Supplied as 0.22µm filtered solution in PBS (pH 7.4).
<b>Molecular Mass</b>	The protein has a predicted MW of 38.2 kDa. Due to glycosylation, the protein migrates to 50-70 kDa based on Tris-Bis PAGE result.
<b>Endotoxin</b>	Less than 1EU per µg by the LAL method.
<b>Purity</b>	> 95% as determined by Tris-Bis PAGE
<b>Storage</b>	Valid for 12 months from date of receipt when stored at -80°C. Recommend to aliquot the protein into smaller quantities for optimal storage. Please do not repeated freeze-

 Tel: 1-631-559-9269    1-516-512-3133

 Email: [info@creative-biomart.com](mailto:info@creative-biomart.com)     Fax: 1-631-938-8127

 45-1 Ramsey Road, Shirley, NY 11967, USA

thaw cycles.

**Reconstitution**

It is recommended that sterile water be added to the vial to prepare a stock solution of 0.2 ug/ul. Centrifuge the vial at 4°C before opening to recover the entire contents.

**Conjugation**

FITC

## GENE INFORMATION

**Gene Name**

TPBG trophoblast glycoprotein [ Homo sapiens ]

**Official Symbol**

TPBG

**Synonyms**

TPBG; trophoblast glycoprotein; 5T4; 5T4 AG; 5T4 oncofetal antigen; 5T4 oncotrophoblast glycoprotein; 5T4 oncofetal trophoblast glycoprotein; M6P1; 5T4AG;

**Gene ID**

7162

**mRNA Refseq**

[NM\\_001166392](#)

**Protein Refseq**

[NP\\_001159864](#)

**MIM**

190920

**UniProt ID**

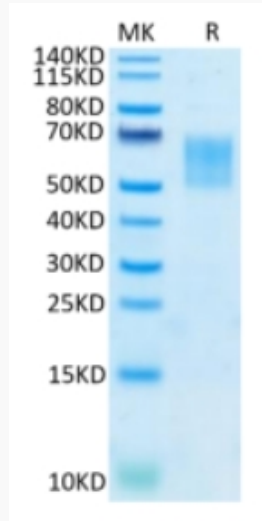
[Q13641](#)

 Tel: 1-631-559-9269 1-516-512-3133

 Email: [info@creative-biomart.com](mailto:info@creative-biomart.com)  Fax: 1-631-938-8127

 45-1 Ramsey Road, Shirley, NY 11967, USA

**Tris-Bis PAGE**



 Tel: 1-631-559-9269 1-516-512-3133

 Email: [info@creative-biomart.com](mailto:info@creative-biomart.com)  Fax: 1-631-938-8127

 45-1 Ramsey Road, Shirley, NY 11967, USA