

# Recombinant Human TPD52L1 Protein, Myc/DDK-tagged, C13 and N15-labeled

Cat. No. TPD52L1-2086H Lot. No. (See product label)

## SPECIFICATION

<b>Product Overview</b>	TPD52L1 MS Standard C13 and N15-labeled recombinant protein (NP_001003396) with a C-terminal MYC/DDK tag, was expressed in HEK293 cells.
<b>Species</b>	Human
<b>Source</b>	HEK293
<b>Description</b>	This gene encodes a member of a family of proteins that contain coiled-coil domains and may form hetero- or homomers. The encoded protein is involved in cell proliferation and calcium signaling. It also interacts with the mitogen-activated protein kinase kinase kinase 5 (MAP3K5/ASK1) and positively regulates MAP3K5-induced apoptosis. Multiple alternatively spliced transcript variants have been observed.
<b>Molecular Mass</b>	16.2 kDa
<b>AA Sequence</b>	MEAAQAGLLETEPLQGTD EDAVASAD FSSMLSEEEKEELKAELVQLEDEITTLRQVL SAKERHLVEIKQKLG MNL MNELKQNF SKSWHDMQTTTAYKKTHE T LSHAGQKATAA FSNVGTAISKKFGDMSYSIRHSISMPAMRRKSGPTRTRPLEQKLISEEDLAANDILDY KDDDDKV
<b>Purity</b>	> 80% as determined by SDS-PAGE and Coomassie blue staining
<b>Stability</b>	Stable for 3 months from receipt of products under proper storage and handling conditions.

 Tel: 1-631-559-9269 1-516-512-3133

 Email: [info@creative-biomart.com](mailto:info@creative-biomart.com)  Fax: 1-631-938-8127

 45-1 Ramsey Road, Shirley, NY 11967, USA

<b>Storage</b>	Store at -80 centigrade. Avoid repeated freeze-thaw cycles.
----------------	---

<b>Concentration</b>	50 µg/mL as determined by BCA
----------------------	-------------------------------

<b>Storage Buffer</b>	100 mM glycine, 25 mM Tris-HCl, pH 7.3.
-----------------------	---

## GENE INFORMATION

<b>Gene Name</b>	TPD52L1 tumor protein D52-like 1 [ Homo sapiens (human) ]
------------------	---

<b>Official Symbol</b>	TPD52L1
------------------------	---------

<b>Synonyms</b>	TPD52L1; tumor protein D52-like 1; tumor protein D53; D53; hD53; MGC8556;
-----------------	---

<b>Gene ID</b>	7164
----------------	------

<b>mRNA Refseq</b>	NM_001003396
--------------------	--------------

<b>Protein Refseq</b>	NP_001003396
-----------------------	--------------

<b>MIM</b>	604069
------------	--------

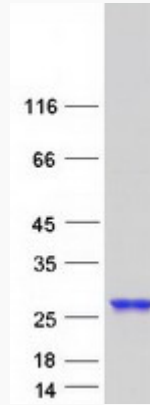
<b>UniProt ID</b>	Q16890
-------------------	--------

 Tel: 1-631-559-9269 1-516-512-3133

 Email: [info@creative-biomart.com](mailto:info@creative-biomart.com)  Fax: 1-631-938-8127

 45-1 Ramsey Road, Shirley, NY 11967, USA

SDS-PAGE



 Tel: 1-631-559-9269 1-516-512-3133

 Email: [info@creative-biomart.com](mailto:info@creative-biomart.com)  Fax: 1-631-938-8127

 45-1 Ramsey Road, Shirley, NY 11967, USA