

# Recombinant Full Length Human TPH2 Protein, C-Flag-tagged

Cat. No. TPH2-1148HFL Lot. No. (See product label)

## SPECIFICATION

<b>Product Overview</b>	Recombinant Full Length Human TPH2 Protein, fused to Flag-tag at C-terminus, was expressed in Mammalian cells.
<b>Species</b>	Human
<b>Source</b>	Mammalian Cells
<b>Description</b>	This gene encodes a member of the pterin-dependent aromatic acid hydroxylase family. The encoded protein catalyzes the first and rate limiting step in the biosynthesis of serotonin, an important hormone and neurotransmitter. Mutations in this gene may be associated with psychiatric diseases such as bipolar affective disorder and major depression.
<b>Form</b>	25 mM Tris HCl, pH 7.3, 100 mM glycine, 10% glycerol.
<b>Molecular Mass</b>	55.9 kDa
<b>AA Sequence</b>	<p>MQPAMMMFSSKYWARRGFSLDSAVPEEHQLLGSSTLNKPNKNSGKNDDKGNKGGSSK            REAATESGKTAVVFSL KNEVGGLVKALRLFQEKRVNMVHIESRKSRRRSSEVEIFVD            CECGKTEFNELIQLLKFTTIVTLNPPEN IWTEEEELEDVPWFPRKISELDKCSHRVL            MYGSELDADHPGFKDNVYRQRRKYFVDVAMGYKYGQPIPRV EYTEEETKTWGVV            FRELSKLYPTHACREYLKNFPLLTKYCGYREDNVPQLEDVSMFLKERSGFTVRPVA            G YLSPRDFLAGLAYRVFHCTQYIRHGSDPLYTPEPDTCHELLGHVPLLADPKFAQFS            QEIGLASLGASDED VQKLATCYFFTIEFGLCKQEGQLRAYGAGLLSSIGELKHALSD            KACVKAFDPKTTCLQECLITTFQEAYF VSESFEEAKEKMRDFAKSITRPFSVYFNPY</p>

 Tel: 1-631-559-9269 1-516-512-3133

 Email: [info@creative-biomart.com](mailto:info@creative-biomart.com)  Fax: 1-631-938-8127

 45-1 Ramsey Road, Shirley, NY 11967, USA

	TQSIEILKDTRSIENVVQDLRSDLNTVCDALNKMNQYLGITRTRPLEQKLISEEDLAAN DILDYKDDDDKV
<b>Purity</b>	> 80% as determined by SDS-PAGE and Coomassie blue staining.
<b>Stability</b>	Stable for 12 months from the date of receipt of the product under proper storage and handling conditions. Avoid repeated freeze-thaw cycles.
<b>Storage</b>	Store at -80 centigrade.
<b>Concentration</b>	>50 ug/mL as determined by microplate BCA method.
<b>Preparation</b>	Recombinant protein was captured through anti-DDK affinity column followed by conventional chromatography steps.
<b>Protein Families</b>	Druggable Genome
<b>Protein Pathways</b>	Metabolic pathways, Tryptophan metabolism
<b>Full Length</b>	Full L.
<b>GENE INFORMATION</b>	
<b>Gene Name</b>	TPH2 tryptophan hydroxylase 2 [ Homo sapiens (human) ]
<b>Official Symbol</b>	TPH2
<b>Synonyms</b>	NTPH; ADHD7
<b>Gene ID</b>	121278

 Tel: 1-631-559-9269 1-516-512-3133

 Email: [info@creative-biomart.com](mailto:info@creative-biomart.com)  Fax: 1-631-938-8127

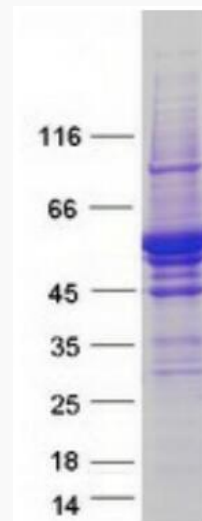
 45-1 Ramsey Road, Shirley, NY 11967, USA

mRNA Refseq [NM\\_173353.4](#)

Protein Refseq [NP\\_775489.2](#)

MIM [607478](#)

UniProt ID [Q8IWU9](#)



Coomassie blue staining of purified TPH2 protein.

 Tel: 1-631-559-9269 1-516-512-3133

 Email: [info@creative-biomart.com](mailto:info@creative-biomart.com)  Fax: 1-631-938-8127

 45-1 Ramsey Road, Shirley, NY 11967, USA