

# Recombinant Full Length Human TPI1 Protein, C-Flag-tagged

Cat. No. TPI1-1400HFL Lot. No. (See product label)

## SPECIFICATION

**Product Overview** Recombinant Full Length Human TPI1 Protein, fused to Flag-tag at C-terminus, was expressed in Mammalian cells.

**Species** Human

**Source** Mammalian Cells

**Description** This gene encodes an enzyme, consisting of two identical proteins, which catalyzes the isomerization of glyceraldehydes 3-phosphate (G3P) and dihydroxy-acetone phosphate (DHAP) in glycolysis and gluconeogenesis. Mutations in this gene are associated with triosephosphate isomerase deficiency. Pseudogenes have been identified on chromosomes 1, 4, 6 and 7. Alternative splicing results in multiple transcript variants.

**Form** 25 mM Tris HCl, pH 7.3, 100 mM glycine, 10% glycerol.

**Molecular Mass** 26.5 kDa

**AA Sequence**

```
MAPSRKFFVGGNWKMNGRKQSLGELIGTLNAAKVPADTEVVCAPPTAYIDFARQKL
DPKIAVAAQNCYKV TNGAFTGEISPGMIKDCGATWVVLGHSERRHVFGESEDELIGQ
KVAHALAEGLGVIACIGEKLDEREAGIT EKVVFQTKVIADNVKDWKVVLAYEPVW
AIGTGKTATPQQAQEVHEKLRGWLKSNVSDAVAQSTRIIYG
GSVTGATCKELASQPDVDGFLVGGASLKPEFVDIINAKQTRTRPLEQKLISEEDLAAN
DILDYKDDDDKV
```

 Tel: 1-631-559-9269 1-516-512-3133

 Email: [info@creative-biomart.com](mailto:info@creative-biomart.com)  Fax: 1-631-938-8127

 45-1 Ramsey Road, Shirley, NY 11967, USA

<b>Purity</b>	> 80% as determined by SDS-PAGE and Coomassie blue staining.
<b>Stability</b>	Stable for 12 months from the date of receipt of the product under proper storage and handling conditions. Avoid repeated freeze-thaw cycles.
<b>Storage</b>	Store at -80 centigrade.
<b>Concentration</b>	>50 ug/mL as determined by microplate BCA method.
<b>Preparation</b>	Recombinant protein was captured through anti-DDK affinity column followed by conventional chromatography steps.
<b>Protein Pathways</b>	Fructose and mannose metabolism, Glycolysis / Gluconeogenesis, Inositol phosphate metabolism, Metabolic pathways
<b>Full Length</b>	Full L.

## GENE INFORMATION

<b>Gene Name</b>	<a href="#">TPI1 triosephosphate isomerase 1 [ Homo sapiens (human) ]</a>
<b>Official Symbol</b>	<a href="#">TPI1</a>
<b>Synonyms</b>	TIM; TPI; TPID; HEL-S-49
<b>Gene ID</b>	<a href="#">7167</a>
<b>mRNA Refseq</b>	<a href="#">NM_000365.6</a>
<b>Protein Refseq</b>	<a href="#">NP_000356.1</a>

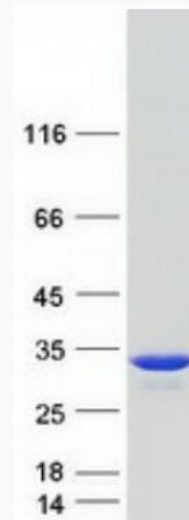
 Tel: 1-631-559-9269 1-516-512-3133

 Email: [info@creative-biomart.com](mailto:info@creative-biomart.com)  Fax: 1-631-938-8127

 45-1 Ramsey Road, Shirley, NY 11967, USA

**MIM** 190450

**UniProt ID** P60174



Coomassie blue staining of purified TPI1 protein.

 Tel: 1-631-559-9269 1-516-512-3133

 Email: [info@creative-biomart.com](mailto:info@creative-biomart.com)  Fax: 1-631-938-8127

 45-1 Ramsey Road, Shirley, NY 11967, USA