

# Recombinant Human TPM1 Protein, Myc/DDK-tagged, C13 and N15-labeled

**Cat. No.** TPM1-1410H    **Lot. No.** (See product label)

## SPECIFICATION

|                         |  |
|-------------------------|--|
| <b>Product Overview</b> | TPM1 MS Standard C13 and N15-labeled recombinant protein (NP_001018005) with a C-terminal MYC/DDK tag, was expressed in HEK293 cells.  |
| <b>Species</b>          | Human  |
| <b>Source</b>           | HEK293   |
| <b>Description</b>      | <p>This gene is a member of the tropomyosin family of highly conserved, widely distributed actin-binding proteins involved in the contractile system of striated and smooth muscles and the cytoskeleton of non-muscle cells. Tropomyosin is composed of two alpha-helical chains arranged as a coiled-coil. It is polymerized end to end along the two grooves of actin filaments and provides stability to the filaments. The encoded protein is one type of alpha helical chain that forms the predominant tropomyosin of striated muscle, where it also functions in association with the troponin complex to regulate the calcium-dependent interaction of actin and myosin during muscle contraction. In smooth muscle and non-muscle cells, alternatively spliced transcript variants encoding a range of isoforms have been described. Mutations in this gene are associated with type 3 familial hypertrophic cardiomyopathy.</p> |
| <b>Molecular Mass</b>   | 32.5 kDa   |
| <b>AA Sequence</b>      | MDAIKKKMQMLKLDKENALDRAEQAEADKKAEDRSKQLEDELVSLQKCLKGTEDEL<br>LDKYSEALKDAQEKLELAEKKATDAEADVASLNRRRIQLVEEELDRAQERLATALQKL   |

 Tel: 1-631-559-9269    1-516-512-3133

 Email: [info@creative-biomart.com](mailto:info@creative-biomart.com)     Fax: 1-631-938-8127

 45-1 Ramsey Road, Shirley, NY 11967, USA

EEAEKAADESERGMKVIESRAQKDEEKMEIQEIQLKEAKHIAEDADRKYEEVARKLVI  
 IESDLERAEEERAEELSEGKCAELEEEELKTVTNNLKSLEAQAEKYSQKEDRYEEEEIKVLS  
 DKLKEAETRAEFAERSVTKLEKSIDDLEDELYAQKLKYKAISEELDHALNDMTSITRTR  
 PLEQKLISEEDLAANDILDYKDDDDKV

**Purity** > 80% as determined by SDS-PAGE and Coomassie blue staining

**Stability** Stable for 3 months from receipt of products under proper storage and handling conditions.

**Storage** Store at -80 centigrade. Avoid repeated freeze-thaw cycles.

**Concentration** 50 µg/mL as determined by BCA

**Storage Buffer** 100 mM glycine, 25 mM Tris-HCl, pH 7.3.

## GENE INFORMATION

**Gene Name** TPM1 tropomyosin 1 [ Homo sapiens (human) ]

**Official Symbol** TPM1

**Synonyms** TPM1; tropomyosin 1 (alpha); C15orf13, cardiomyopathy, hypertrophic 3, chromosome 15 open reading frame 13, CMH3; tropomyosin alpha-1 chain; alpha-tropomyosin; sarcomeric tropomyosin kappa; cardiomyopathy, hypertrophic 3; tropomyosin 1 (alpha) isoform 1; tropomyosin 1 (alpha) isoform 2; tropomyosin 1 (alpha) isoform 3; tropomyosin 1 (alpha) isoform 4; tropomyosin 1 (alpha) isoform 5; tropomyosin 1 (alpha) isoform 6; tropomyosin 1 (alpha) isoform 7; CMH3; TMSA; CMD1Y; C15orf13; HTM-alpha;

**Gene ID** 7168

 Tel: 1-631-559-9269 1-516-512-3133

 Email: [info@creative-biomart.com](mailto:info@creative-biomart.com)  Fax: 1-631-938-8127

 45-1 Ramsey Road, Shirley, NY 11967, USA

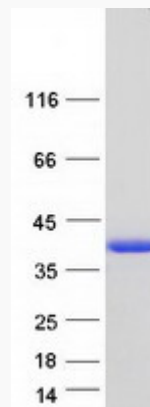
mRNA Refseq [NM\\_001018005](#)

Protein Refseq [NP\\_001018005](#)

MIM [191010](#)

UniProt ID [P09493](#)

SDS-PAGE



 Tel: 1-631-559-9269 1-516-512-3133

 Email: [info@creative-biomart.com](mailto:info@creative-biomart.com)  Fax: 1-631-938-8127

 45-1 Ramsey Road, Shirley, NY 11967, USA