

Recombinant Human TPM1 Protein, Myc/DDK-tagged, C13 and N15-labeled

Cat. No. TPM1-3255H **Lot. No.** (See product label)

SPECIFICATION

Product Overview	TPM1 MS Standard C13 and N15-labeled recombinant protein (NP_001018020) with a C-terminal MYC/DDK tag, was expressed in HEK293 cells.
Species	Human
Source	HEK293
Description	<p>This gene is a member of the tropomyosin family of highly conserved, widely distributed actin-binding proteins involved in the contractile system of striated and smooth muscles and the cytoskeleton of non-muscle cells. Tropomyosin is composed of two alpha-helical chains arranged as a coiled-coil. It is polymerized end to end along the two grooves of actin filaments and provides stability to the filaments. The encoded protein is one type of alpha helical chain that forms the predominant tropomyosin of striated muscle, where it also functions in association with the troponin complex to regulate the calcium-dependent interaction of actin and myosin during muscle contraction. In smooth muscle and non-muscle cells, alternatively spliced transcript variants encoding a range of isoforms have been described. Mutations in this gene are associated with type 3 familial hypertrophic cardiomyopathy.</p>
Molecular Mass	32.6 kDa
AA Sequence	MDAIKKKMQMLKLDKENALDRAEQAEADKKAEDRSKQLEEDIAAKEKLLRVSEDE RDRVLEELHKAEDSLLAAEEAAAKAEADVASLNRRRIQLVEEELDRAQERLATALQKL

 Tel: 1-631-559-9269 1-516-512-3133

 Email: info@creative-biomart.com  Fax: 1-631-938-8127

 45-1 Ramsey Road, Shirley, NY 11967, USA

EEAEKAADESERGMKVIESRAQKDEEKMEIQEIQLKEAKHIAEDADRKYEEVARKLVI
 IESDLERAEEERAEELSEGQVRQLEEQLRIMDQTLKALMAAEDKYSQKEDRYEEIEKVL
 SDKLKEAETRAEFAERSVTKLEKSIDDLEEKVAHAKEENLSMHQMLDQTLLELNMT
 RTRPLEQKLISEEDLAANDILDYKDDDDKV

Purity > 80% as determined by SDS-PAGE and Coomassie blue staining

Stability Stable for 3 months from receipt of products under proper storage and handling conditions.

Storage Store at -80 centigrade. Avoid repeated freeze-thaw cycles.

Concentration 50 µg/mL as determined by BCA

Storage Buffer 100 mM glycine, 25 mM Tris-HCl, pH 7.3.

GENE INFORMATION

Gene Name TPM1 tropomyosin 1 [Homo sapiens (human)]

Official Symbol TPM1

Synonyms TPM1; tropomyosin 1 (alpha); C15orf13, cardiomyopathy, hypertrophic 3, chromosome 15 open reading frame 13, CMH3; tropomyosin alpha-1 chain; alpha-tropomyosin; sarcomeric tropomyosin kappa; cardiomyopathy, hypertrophic 3; tropomyosin 1 (alpha) isoform 1; tropomyosin 1 (alpha) isoform 2; tropomyosin 1 (alpha) isoform 3; tropomyosin 1 (alpha) isoform 4; tropomyosin 1 (alpha) isoform 5; tropomyosin 1 (alpha) isoform 6; tropomyosin 1 (alpha) isoform 7; CMH3; TMSA; CMD1Y; C15orf13; HTM-alpha;

Gene ID 7168

 Tel: 1-631-559-9269 1-516-512-3133

 Email: info@creative-biomart.com  Fax: 1-631-938-8127

 45-1 Ramsey Road, Shirley, NY 11967, USA

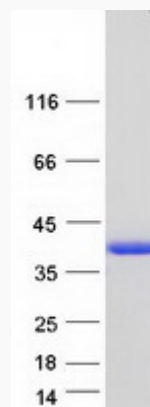
mRNA Refseq [NM_001018020](#)

Protein Refseq [NP_001018020](#)

MIM [191010](#)

UniProt ID [P09493](#)

SDS-PAGE



 Tel: 1-631-559-9269 1-516-512-3133

 Email: info@creative-biomart.com  Fax: 1-631-938-8127

 45-1 Ramsey Road, Shirley, NY 11967, USA