

Recombinant Human TPM1 protein, His-tagged

Cat. No. TPM1-5402H Lot. No. (See product label)

SPECIFICATION

Product Overview	Recombinant Human TPM1 protein(P09493-4)(299aa), fused with N-terminal His tag, was expressed in E. coli.
Species	Human
Source	E.coli
Protein Length	299aa
Tag	N-His
Form	20mM Tris.Cl, 50mM NaCl, 50% Glycerol, pH8.0.
Molecular Mass	34.8kDa
Storage	Store at -80°C and avoid repeated freeze-thaw cycles.
Reconstitution	It is recommended that sterile water be added to the vial to prepare a stock solution of 0.2 ug/ul. Centrifuge the vial at 4°C before opening to recover the entire contents.

GENE INFORMATION

Gene Name	TPM1 tropomyosin 1 (alpha) [Homo sapiens]
Official Symbol	TPM1

 Tel: 1-631-559-9269 1-516-512-3133

 Email: info@creative-biomart.com  Fax: 1-631-938-8127

 45-1 Ramsey Road, Shirley, NY 11967, USA

Synonyms TPM1; tropomyosin 1 (alpha); C15orf13, cardiomyopathy, hypertrophic 3 , chromosome 15 open reading frame 13 , CMH3; tropomyosin alpha-1 chain; alpha-tropomyosin; sarcomeric tropomyosin kappa; cardiomyopathy, hypertrophic 3; tropomyosin 1 (alpha) isoform 1; tropomyosin 1 (alpha) isoform 2; tropomyosin 1 (alpha) isoform 3; tropomyosin 1 (alpha) isoform 4; tropomyosin 1 (alpha) isoform 5; tropomyosin 1 (alpha) isoform 6; tropomyosin 1 (alpha) isoform 7; CMH3; TMSA; CMD1Y; C15orf13; HTM-alpha;

Gene ID 7168

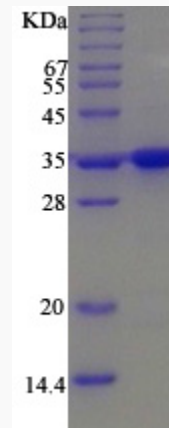
mRNA Refseq NM_000366

Protein Refseq NP_000357

MIM 191010

UniProt ID P09493

SDS-PAGE



 Tel: 1-631-559-9269 1-516-512-3133

 Email: info@creative-biomart.com  Fax: 1-631-938-8127

 45-1 Ramsey Road, Shirley, NY 11967, USA