

Recombinant Human TPM2 Protein, Myc/DDK-tagged, C13 and N15-labeled

Cat. No. TPM2-6005H **Lot. No.** (See product label)

SPECIFICATION

Product Overview	TPM2 MS Standard C13 and N15-labeled recombinant protein (NP_003280) with a C-terminal MYC/DDK tag, was expressed in HEK293 cells.
Species	Human
Source	HEK293
Description	This gene encodes beta-tropomyosin, a member of the actin filament binding protein family, and mainly expressed in slow, type 1 muscle fibers. Mutations in this gene can alter the expression of other sarcomeric tropomyosin proteins, and cause cap disease, nemaline myopathy and distal arthrogyposis syndromes. Alternatively spliced transcript variants encoding different isoforms have been found for this gene.
Molecular Mass	32.7 kDa
AA Sequence	MDAIKKKMQMLKLDKENAIDRAEQAEADKKQAEDRCKQLEEEQQALQKCLKGTEDE VEKYSESVKEAQEKLEQAEKKATDAEADVASLNRRIQLVEEELDRAQERLATALQKL EEAEKAADESERGMKVIENRAMKDEEKMELQEMQLKEAKHIAEDSDRKYEEVARKL VILEGELERSEERA EVAESKCGDLEELKIVTNNLKSLEAQADKYSTKEDKYEEEEIKLL EEKLKEAETRAEFAERSVAKLEKTIDDEDEVYAQKMKYKAISEELDNALNDITSLTRT RPLEQKLISEEDLAANDILDYKDDDDKV
Purity	> 80% as determined by SDS-PAGE and Coomassie blue staining

 Tel: 1-631-559-9269 1-516-512-3133

 Email: info@creative-biomart.com  Fax: 1-631-938-8127

 45-1 Ramsey Road, Shirley, NY 11967, USA

Stability	Stable for 3 months from receipt of products under proper storage and handling conditions.
Storage	Store at -80 centigrade. Avoid repeated freeze-thaw cycles.
Concentration	50 µg/mL as determined by BCA
Storage Buffer	100 mM glycine, 25 mM Tris-HCl, pH 7.3.

GENE INFORMATION

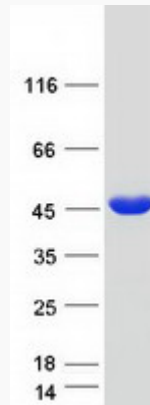
Gene Name	TPM2 tropomyosin 2 [Homo sapiens (human)]
Official Symbol	TPM2
Synonyms	TPM2; tropomyosin 2 (beta); AMCD1, arthrogyrosis multiplex congenital, distal, type 1; tropomyosin beta chain; DA1; tropomyosin-2; DA2B; NEM4; TMSB; AMCD1;
Gene ID	7169
mRNA Refseq	NM_003289
Protein Refseq	NP_003280
MIM	190990
UniProt ID	P07951

 Tel: 1-631-559-9269 1-516-512-3133

 Email: info@creative-biomart.com  Fax: 1-631-938-8127

 45-1 Ramsey Road, Shirley, NY 11967, USA

SDS-PAGE



 Tel: 1-631-559-9269 1-516-512-3133

 Email: info@creative-biomart.com  Fax: 1-631-938-8127

 45-1 Ramsey Road, Shirley, NY 11967, USA