

## Recombinant Chicken TPO Protein

Cat. No. TPO-68C Lot. No. (See product label)

### SPECIFICATION

<b>Product Overview</b>	Recombinant Chicken TPO Protein without tag was expressed in E. coli.
<b>Species</b>	Chicken
<b>Source</b>	E.coli
<b>Description</b>	<p>This gene encodes a membrane-bound glycoprotein. The encoded protein acts as an enzyme and plays a central role in thyroid gland function. The protein functions in the iodination of tyrosine residues in thyroglobulin and phenoxy-ester formation between pairs of iodinated tyrosines to generate the thyroid hormones, thyroxine and triiodothyronine. Mutations in this gene are associated with several disorders of thyroid hormonogenesis, including congenital hypothyroidism, congenital goiter, and thyroid hormone organification defect IIA. Multiple transcript variants encoding distinct isoforms have been identified for this gene, but the full-length nature of some variants has not been determined.</p>
<b>Form</b>	Liquid
<b>Molecular Mass</b>	~ 18 kDa
<b>Purity</b>	> 90% as determined by SDS-PAGE
<b>Storage</b>	Short Term Storage at +4 centigrade. Long Term, please prepare aliquots with 20% glycerol and store at -20 to -80 centigrade. Avoid freeze/thaw cycles.

 Tel: 1-631-559-9269 1-516-512-3133

 Email: [info@creative-biomart.com](mailto:info@creative-biomart.com)  Fax: 1-631-938-8127

 45-1 Ramsey Road, Shirley, NY 11967, USA

**Storage Buffer** 1xPBS pH 7.4

## GENE INFORMATION

**Gene Name** TPO thyroid peroxidase [ Gallus gallus (chicken) ]

**Official Symbol** TPO

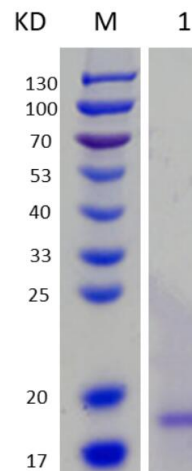
**Synonyms** TPO; thyoid peroxidase; LOW QUALITY PROTEIN: thyroid peroxidase; thyroid peroxidase; EC 1.11.1.8

**Gene ID** 776120

**mRNA Refseq** XM\_046939321

**Protein Refseq** XP\_046795277

**12% SDS-PAGE  
analysis of purified  
TPO (CBB stained)**



Lane M: Protein Marker

Tel: 1-631-559-9269 1-516-512-3133

Email: [info@creative-biomart.com](mailto:info@creative-biomart.com) Fax: 1-631-938-8127

45-1 Ramsey Road, Shirley, NY 11967, USA



Lane 1: TPO

 Tel: 1-631-559-9269 1-516-512-3133

 Email: [info@creative-biomart.com](mailto:info@creative-biomart.com)  Fax: 1-631-938-8127

 45-1 Ramsey Road, Shirley, NY 11967, USA