

## Recombinant Human TPP1 protein, His-tagged

Cat. No. TPP1-329H Lot. No. (See product label)

### SPECIFICATION

<b>Product Overview</b>	Recombinant Human Tripeptidyl-Peptidase I is produced by our Mammalian expression system and the target gene encoding Ser20-Pro563 is expressed with a 6His tag at the C-terminus.
<b>Species</b>	Human
<b>Source</b>	HEK293
<b>ProteinLength</b>	Ser20-Pro563
<b>Description</b>	Tripeptidyl-Peptidase 1 (TPP1) belongs to the peptidase S53 family. TPP1 is detected in all tissues examined with highest levels in heart and placenta and relatively similar levels in other tissues. TPP1 is lysosomal serine protease with tripeptidyl-peptidase I activity. TPP1 may act as a non-specific lysosomal peptidase which generates tripeptides from the breakdown products produced by lysosomal proteinases. TPP1 requires substrates with an unsubstituted N-terminus. TPP1 mutations have also been shown to cause neuronal ceroid lipofuscinosis type 2 (CLN2).
<b>Form</b>	Supplied as a 0.2 µm filtered solution of 20mM Tris-HCl, 150mM NaCl, 1mM CaCl <sub>2</sub> , 10% Glycerol, pH 7.5.
<b>Molecular Mass</b>	23.94 kDa
<b>Endotoxin</b>	Less than 0.1 ng/g (1 EU/g) as determined by LAL test.

 Tel: 1-631-559-9269 1-516-512-3133

 Email: [info@creative-biomart.com](mailto:info@creative-biomart.com)  Fax: 1-631-938-8127

 45-1 Ramsey Road, Shirley, NY 11967, USA

<b>Purity</b>	Greater than 95% as determined by reducing SDS-PAGE.
<b>Storage</b>	Store at <-20°C, stable for 6 months after receipt. Please minimize freeze-thaw cycles.
<b>Reconstitution</b>	It is recommended that sterile water be added to the vial to prepare a stock solution of 0.2 µg/µl. Centrifuge the vial at 4°C before opening to recover the entire contents.
<b>Shipping</b>	The product is shipped on dry ice/polar packs. Upon receipt, store it immediately at the temperature listed below.

## GENE INFORMATION

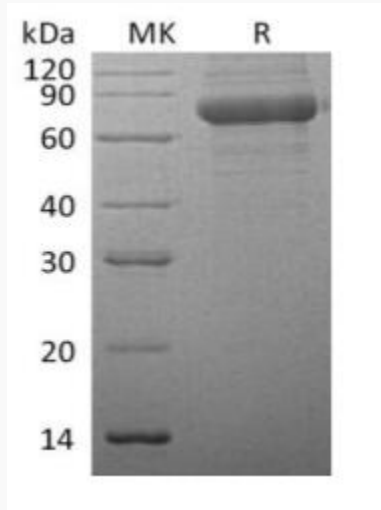
<b>Gene Name</b>	TPP1
<b>Official Symbol</b>	TPP1
<b>Synonyms</b>	Tripeptidyl-Peptidase 1; TPP-1; Cell Growth-Inhibiting Gene 1 Protein; Lysosomal PepstatinInsensitive Protease; LPIC; Tripeptidyl Aminopeptidase; Tripeptidyl-Peptidase I; TPP-I; TPP1; CLN2
<b>Gene ID</b>	1200
<b>mRNA Refseq</b>	NM_000391.4
<b>Protein Refseq</b>	NP_000382.3
<b>MIM</b>	607998
<b>UniProt ID</b>	O14773

 Tel: 1-631-559-9269 1-516-512-3133

 Email: [info@creative-biomart.com](mailto:info@creative-biomart.com)  Fax: 1-631-938-8127

 45-1 Ramsey Road, Shirley, NY 11967, USA

**SDS-PAGE of TPP1-329H**



 Tel: 1-631-559-9269 1-516-512-3133

 Email: [info@creative-biomart.com](mailto:info@creative-biomart.com)  Fax: 1-631-938-8127

 45-1 Ramsey Road, Shirley, NY 11967, USA