

Recombinant Full Length Human TPP2 Protein, C-Flag-tagged

Cat. No. TPP2-1098HFL Lot. No. (See product label)

SPECIFICATION

Product Overview	Recombinant Full Length Human TPP2 Protein, fused to Flag-tag at C-terminus, was expressed in Mammalian cells.
Species	Human
Source	Mammalian Cells
Description	This gene encodes a mammalian peptidase that, at neutral pH, removes tripeptides from the N terminus of longer peptides. The protein has a specialized function that is essential for some MHC class I antigen presentation. The protein is a high molecular mass serine exopeptidase; the amino acid sequence surrounding the serine residue at the active site is similar to the peptidases of the subtilisin class rather than the trypsin class.
Form	25 mM Tris HCl, pH 7.3, 100 mM glycine, 10% glycerol.
Molecular Mass	138.2 kDa
AA Sequence	MATAATEEPFPFHGLLPKKETGAASFLCRYPEYDGRGVLI AVLDTGVDPGAPGMQV TTDGKPKIVDIIDT TGSGDVNTATEVEPKDGEIVGLSGRVLKIPASWTNPSGKYHIGIK NGYDFYPKALKERIKERKEKIWDP VHRVALAEACRKQEEFDVANNGSSQANKLIK EELQSQVELLNSFEKKYSDPGPVYDCLVWHDGEVWRACI DSNEDGDLSKSTVLRN YKEAQEYGSFGTAEMLNYSVNIYDDGNLLSIVTSGGAHGTHVASIAAGHFPEEP ER NGVAPGAQILSIKIGDTRLSTMETGTGLIRAMIEVINHKCDLVNYSYGEATHWPNSGR ICEVINEAVW KHNIIVSSAGNNGPCLSTVGCPCGGTTSSVIGVGAYVSPDMMVAEYS

 Tel: 1-631-559-9269 1-516-512-3133

 Email: info@creative-biomart.com  Fax: 1-631-938-8127

 45-1 Ramsey Road, Shirley, NY 11967, USA

LREKLPANQYTWSSRGPSADGAL GVSISAPGGAIASVPNWTLRGTQLMNGTSMSS
 PNACGGIALILSGLKANNIDYTVHSVRRALENTAVKAD NIEVFAQGHGIIQVDKAYDY
 LVQNTSFANKLGFTVTVGNNRGIYLRDPVQVAAPSDHGVGIEPVFPENTE NSEKISL
 QLHLALTSNSSWVQCPSHLELMNQCRHINIRVDPRGLREGLHYTEVCGYDIASPNA
 GPLFRVP ITAVIAAKVNESSHYDLAFTDVHFKPGQIRRHFIIEVPEGATWAEVTVCS
 SSEVSAKVLHAVQLVKQRA YRSHEFYKFCSLPEKGTLEAFPVLGGKAIEFCIARW
 WASLSDVNIDYTISFHGIVCTAPQLNIHASEGI NRFDVQSSLYEDLAPCITLKNWVQ
 TLRPVSAKTKPLGSRDVLNNRQLYEMVLTYNFHQPKSGEVTPSC PLLCELLYESE
 FDSQLWIIFDQNKRMGSGDAYPHQYSLKLEKGDYTIRLQIRHEQISDLERLKDLPFI
 V SHRLSNTLSLDIHENHSFALLGKKKSSNLTLPKYNQPFVTSPLPDDKIPKGAGPG
 CYLAGSLTLSKTEL GKKADVIVHYLIPPPTKTKNGSKDKEKDSEKEKDLKEEFTEA
 LRDLEKIWMTKLDSSDIYNELKETYP NYLPLYVARLHQLDAEKERMKRLNEIVDAAN
 AVISHIDQTALAVYIAMKTDPRPDAATIKNDMDKQKSTL VDALCRKGCALADHLLHT
 QAQDGAISTDAEGKEEEGESPLDSLAEFWETTKWTDLFDNKVLTFAFKHAL
 VNKMYGRGLKFATKLVEEKPTKENWKNCIQLMKLLGWTHCASFTENWLPIMYPPDY
 CVFTRTRPLEQKLISEEDLAANDILDYKDDDDKV

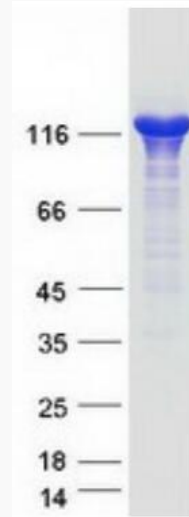
Purity	> 80% as determined by SDS-PAGE and Coomassie blue staining.
Stability	Stable for 12 months from the date of receipt of the product under proper storage and handling conditions. Avoid repeated freeze-thaw cycles.
Storage	Store at -80 centigrade.
Concentration	>50 ug/mL as determined by microplate BCA method.
Preparation	Recombinant protein was captured through anti-DDK affinity column followed by conventional chromatography steps.
Protein Families	Druggable Genome, Protease

 Tel: 1-631-559-9269 1-516-512-3133

 Email: info@creative-biomart.com  Fax: 1-631-938-8127

 45-1 Ramsey Road, Shirley, NY 11967, USA

Full Length Full L.**GENE INFORMATION****Gene Name** [TPP2 tripeptidyl peptidase 2 \[Homo sapiens \(human\) \]](#)**Official Symbol** [TPP2](#)**Synonyms** [IMD78](#); [TPP-2](#); [TPPII](#); [TPP-II](#)**Gene ID** [7174](#)**mRNA Refseq** [NM_003291.4](#)**Protein Refseq** [NP_003282.2](#)**MIM** [190470](#)**UniProt ID** [P29144](#) Tel: 1-631-559-9269 1-516-512-3133 Email: info@creative-biomart.com  Fax: 1-631-938-8127 45-1 Ramsey Road, Shirley, NY 11967, USA



Coomassie blue staining of purified TPP2 protein.

Tel: 1-631-559-9269 1-516-512-3133

Email: info@creative-biomart.com Fax: 1-631-938-8127

45-1 Ramsey Road, Shirley, NY 11967, USA