

# Recombinant Human TPP2 Protein, Myc/DDK-tagged, C13 and N15-labeled

**Cat. No.** TPP2-6449H    **Lot. No.** (See product label)

## SPECIFICATION

### Product Overview

TPP2 MS Standard C13 and N15-labeled recombinant protein (NP\_003282) with a C-terminal MYC/DDK tag, was expressed in HEK293 cells.

### Species

Human

### Source

HEK293

### Description

This gene encodes a mammalian peptidase that, at neutral pH, removes tripeptides from the N terminus of longer peptides. The protein has a specialized function that is essential for some MHC class I antigen presentation. The protein is a high molecular mass serine exopeptidase; the amino acid sequence surrounding the serine residue at the active site is similar to the peptidases of the subtilisin class rather than the trypsin class.

### Molecular Mass

138.3 kDa

### AA Sequence

MATAATEEPFPFHGLLPKKETGAASFLCRYPEYDGRGVLI AVLDTGVDPGAPGMQV  
 TTDGKPKIVDII DTTGSGDVNTATEVEPKDGEIVGLSGRVLKIPASWTNPSGKYHIGIK  
 NGYDFYPKALKERIQKERKEKIWDPVHRVALAEACRKQEEFDVANNGSSQANKLIKE  
 ELQSQVELLNSFEKKYSDPGPVYDCLVWHDGEVWRACIDSNEDGDLSKSTVLRNY  
 KEAQEYGSFGTAEMLNYSVNIYDDGNLLSIVTSGGAHGTHVASIAAGHFPEEPERNG  
 VAPGAQILSIKIGDTRLSTMETGTGLIRAMIEVINHKCDLVNYSYGEATHWPNSGRICE  
 VINEAVWKHNIIYVSSAGNNGPCLSTVGCPGGTTSSVIGVGAYVSPDMMVAEYSLRE

 Tel: 1-631-559-9269    1-516-512-3133

 Email: [info@creative-biomart.com](mailto:info@creative-biomart.com)     Fax: 1-631-938-8127

 45-1 Ramsey Road, Shirley, NY 11967, USA

KLPANQYTWSSRGPSADGALGVSISAPGGAIASVPNWTLRGTQLMNGTSMSSPNA  
 CGGIALILSGLKANNIDYTVHSVRRALENTAVKADNIEVFAQGHGIIQVDKAYDYLVQN  
 TSFANKLGFTVTVGNNRGIYLRDPVQVAAPSDHGVGIEPVFPENTENSEKISLQLHLA  
 LTSNSSWVQCPSHLELMNQCRHINIRVDPRGLREGLHYTEVCGYDIASPNAGPLFR  
 VPITAVIAAKVNESSHYDLAFTDVHFKPGQIRRHFIIEVPEGATWAEVTVCSSESSEVSA  
 KFVLHAVQLVKQRAYRSHEFYKFCSLPEKGLTEAFPVLGGKAIEFCIARWWASLSD  
 VNIDYTISFHGIVCTAPQLNIHASEGINRFDVQSSLYEDLAPCITLKNWVQTLRPVSA  
 KTKPLGSRDVLNNRQLYEMVLTYNFHQPKSGEVTSPSCPLLCELLYESEFDSQLWII  
 FDQNKRMGSGDAYPHQYSLKLEKGDYTIRLQIRHEQISDLERLKDLPFIVSHRLSNT  
 LSLDIHENHSFALLGKKKSSNLTLPKYNQPFVTSPLPDDKIPKGAGPGCYLAGSLTL  
 SKTELGKKADVIPVHYLLIPPPTKTKNGSKDKEKDSEKEKDLKEEFTEALRDLKIQWM  
 TKLDSSDIYNELKETYPNYLPLYVARLHQLDAEKERMKRLNEIVDAANAVISHIDQTAL  
 AVYIAMKTDPRPDAATIKNDMDKQKSTLVDALCRKGCALADHLLHTQAQDGAISTDA  
 EGKEEEGESPLDSLAEFTWETTKWTDLFDNKVLTFAFKHALVNKMYGRGLKFATKL  
 VEEKPTKENWKNCIQLMKLLGWTHCASFTENWLPIMYPPDYCVFTRTRPLEQKLISE  
 EDLAANDILDYKDDDDKV

<b>Purity</b>	> 80% as determined by SDS-PAGE and Coomassie blue staining
<b>Stability</b>	Stable for 3 months from receipt of products under proper storage and handling conditions.
<b>Storage</b>	Store at -80 centigrade. Avoid repeated freeze-thaw cycles.
<b>Concentration</b>	50 µg/mL as determined by BCA
<b>Storage Buffer</b>	100 mM glycine, 25 mM Tris-HCl, pH 7.3.

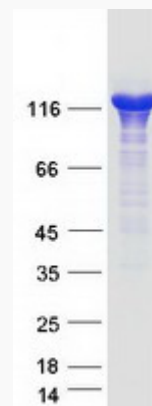
## GENE INFORMATION

 Tel: 1-631-559-9269 1-516-512-3133

 Email: [info@creative-biomart.com](mailto:info@creative-biomart.com)  Fax: 1-631-938-8127

 45-1 Ramsey Road, Shirley, NY 11967, USA

<b>Gene Name</b>	TPP2 tripeptidyl peptidase II [ Homo sapiens (human) ]
<b>Official Symbol</b>	TPP2
<b>Synonyms</b>	TPP2; tripeptidyl peptidase II; tripeptidyl-peptidase 2; TPP-II; tripeptidyl-peptidase II; tripeptidyl aminopeptidase; TPP-2; FLJ40359;
<b>Gene ID</b>	7174
<b>mRNA Refseq</b>	NM_003291
<b>Protein Refseq</b>	NP_003282
<b>MIM</b>	190470
<b>UniProt ID</b>	P29144

**SDS-PAGE**


 Tel: 1-631-559-9269 1-516-512-3133

 Email: [info@creative-biomart.com](mailto:info@creative-biomart.com)  Fax: 1-631-938-8127

 45-1 Ramsey Road, Shirley, NY 11967, USA