

Recombinant Human TPSAB1 Protein, His-tagged

Cat. No. TPSAB1-241H Lot. No. (See product label)

SPECIFICATION

Product Overview	Recombinant Human TPSAB1(31-275aa) fused with His tag at C-terminal was expressed in Insect cells.
Species	Human
Source	Insect Cells
ProteinLength	31-275aa
Description	TPSAB1, also known as trypsin alpha/beta-1, is a serine protease with trypsin-like specificity. It is the key neutral protease present in mast cells and is discharged upon the coupled activation-degranulation response of this cell type. This protein is enzymatically active only as a heparin-stabilized tetramer, and is resistant to all known endogenous proteinase inhibitors. Also, it is implicated as a mediator in the pathogenesis of asthma and other allergic and inflammatory disorders.
Predicted N Terminal	Ile31
Form	Liquid. In Phosphate Buffered Saline (pH 7.4) containing 10% glycerol.
Molecular Mass	28.2kDa (251aa) 28-40kDa (SDS-PAGE under reducing conditions)
AA Sequence	IVGGQEAPRS KWPWQVSLRV HGPYWMHFCG GSLIHPQWVL TAAHCVGPDV KDLAALRVQL REQHLYYQDQ LLPVSRIIVH PQFYTAQIGA DIALLELEEP VNVSSHVHTV TLPPASETFP PGMPCWVTGW GDVDNDERLP

 Tel: 1-631-559-9269 1-516-512-3133

 Email: info@creative-biomart.com  Fax: 1-631-938-8127

 45-1 Ramsey Road, Shirley, NY 11967, USA

PPFPLKQVKV PIMENHICDA KYHLGAYTGD DVRIVRDDML
 CAGNTRRDSC QGDSGGPLVC KVNGTWLQAG VVSWGEGCAQ PNRPGIYTRV
 TYYLDWIHHY VPKKPHHHHH H

Purity > 90% by SDS - PAGE

Applications SDS-PAGE

Storage Can be stored at +4 centigrade short term (1-2 weeks). For long term storage, aliquot and store at -20 centigrade or -70 centigrade. Avoid repeated freezing and thawing cycles.

Concentration 0.5 mg/ml (determined by Absorbance at 280)

GENE INFORMATION

Gene Name [TPSAB1 tryptase alpha/beta 1 \[Homo sapiens \]](#)

Official Symbol [TPSAB1](#)

Synonyms TPSAB1; tryptase alpha/beta 1; TPS1, TPS2, TPSB1, tryptase beta 1; tryptase alpha/beta-1; tryptase alpha II; tryptase beta I; tryptase I; tryptase II; tryptase III; tryptase-1; tryptase-I; tryptase-III; tryptase beta 1; tryptase beta-1; tryptase alpha-1; mast cell beta I tryptase; mast cell alpha II tryptase; TPS1; TPS2; TPSB1; MGC104064;

Gene ID [7177](#)

mRNA Refseq [NM_003294](#)

Protein Refseq [NP_003285](#)

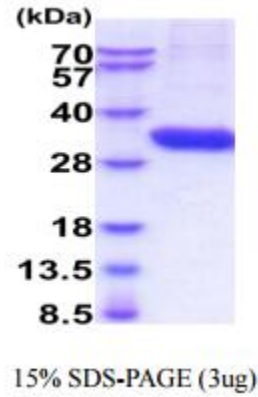
 Tel: 1-631-559-9269 1-516-512-3133

 Email: info@creative-biomart.com  Fax: 1-631-938-8127

 45-1 Ramsey Road, Shirley, NY 11967, USA

MIM 191080

UniProt ID Q15661



 Tel: 1-631-559-9269 1-516-512-3133

 Email: info@creative-biomart.com  Fax: 1-631-938-8127

 45-1 Ramsey Road, Shirley, NY 11967, USA