

Recombinant Human TPSAB1 Protein (Met1-Val133, Ser135-Gly199, Asp201-Pro275), C-His tagged

Cat. No. TPSAB1-6507H Lot. No. (See product label)

SPECIFICATION

Product Overview	Recombinant human TPSAB1 (Met1-Pro275, Met1-Val133 & Ser135-Gly199 & Asp201-Pro275) fused with the C-terminal His tag was expressed in mammalian cells.
Species	Human
Source	Mammalian Cells
ProteinLength	Met1-Val133, Ser135-Gly199, Asp201-Pro275
Form	Lyophilized powder/frozen liquid
Molecular Mass	31.23 kDa
Purity	> 90 % as determined by SDS-PAGE
Notes	For research use only.
Storage	Use a manual defrost freezer and avoid repeated freeze thaw cycles. Store at 2 to 8 centigrade for one week. Store at -20 to -80 centigrade for twelve months from the date of receipt.
Storage Buffer	Supplied as solution form in 150 mM NaCl, 50 mM Tris-HCl, pH 7.5 or lyophilized from 150 mM NaCl, 50 mM Tris-HCl, pH 7.5.

 Tel: 1-631-559-9269 1-516-512-3133

 Email: info@creative-biomart.com  Fax: 1-631-938-8127

 45-1 Ramsey Road, Shirley, NY 11967, USA

Reconstitution Reconstitute in sterile water for a stock solution.

Shipping They are shipped out with dry ice/blue ice unless customers require otherwise.

GENE INFORMATION

Gene Name [TPSAB1 tryptase alpha/beta 1 \[Homo sapiens \(human\) \]](#)

Official Symbol [TPSAB1](#)

Synonyms TPSAB1; tryptase alpha/beta 1; TPS1, TPS2, TPSB1, tryptase beta 1; tryptase alpha/beta-1; tryptase alpha II; tryptase beta I; tryptase I; tryptase II; tryptase III; tryptase-1; tryptase-I; tryptase-III; tryptase beta 1; tryptase beta-1; tryptase alpha-1; mast cell beta I tryptase; mast cell alpha II tryptase; TPS1; TPS2; TPSB1; MGC104064;

Gene ID [7177](#)

mRNA Refseq [NM_003294](#)

Protein Refseq [NP_003285](#)

MIM [191080](#)

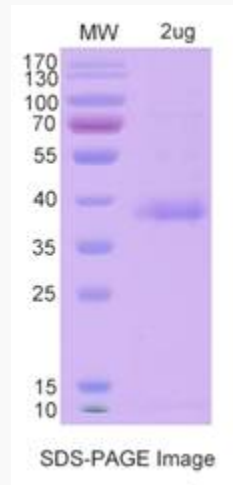
UniProt ID [Q15661](#)

 Tel: 1-631-559-9269 1-516-512-3133

 Email: info@creative-biomart.com  Fax: 1-631-938-8127

 45-1 Ramsey Road, Shirley, NY 11967, USA

SDS-PAGE



 Tel: 1-631-559-9269 1-516-512-3133

 Email: info@creative-biomart.com  Fax: 1-631-938-8127

 45-1 Ramsey Road, Shirley, NY 11967, USA