

Recombinant Mouse TPSB2 protein, His-tagged

Cat. No. TPSB2-419M Lot. No. (See product label)

SPECIFICATION

Product Overview Recombinant Mouse Tryptase beta-2 is produced by our Mammalian expression system and the target gene encoding Ala23-Ser276 is expressed with a 6His tag at the C-terminus.

Species Mouse

Source HEK293

ProteinLength Ala23-Ser276

Description Tryptase beta-2(Tpsb2), also known as Mast cell protease 6(mMCP-6), belongs to the peptidase S1 family and Tryptase subfamily. Tryptase is the major neutral protease present in mast cells and is secreted upon the coupled activation-degranulation response of this cell type. It plays a role in innate immunity. Tpsb2 can be detected primarily in skin during embryogenesis. Tpsb2 can not be detected at early embryonic stages but is abundantly expressed in later stages with a peak at E17.5-E18.5. Tryptase is a homotetramer. The active tetramer is converted to inactive monomers at neutral and acidic pH in the absence of heparin. Low concentrations of inactive monomers become active monomers at pH 6.0 in the presence of heparin. When the concentration of active monomers is higher, they convert to active monomers and then to active tetramers. These monomers are active and functionally distinct from the tetrameric enzyme. In contrast to the hidden active sites in the tetrameric form, the active site of the monomeric form is accessible for macromolecular proteins and inhibitors eg: fibrinogen which is a substrate for the monomeric but not for the

 Tel: 1-631-559-9269 1-516-512-3133

 Email: info@creative-biomart.com  Fax: 1-631-938-8127

 45-1 Ramsey Road, Shirley, NY 11967, USA

tetrameric form. The monomeric form forms a complex with SERPINB6.

Form Supplied as a 0.2 µm filtered solution of 20mM Tris-HCl, 150mM NaCl, pH 7.5.

Molecular Mass 29.3kDa

Endotoxin Less than 0.1 ng/ug (1 EU/ug) as determined by LAL test.

Purity Greater than 95% as determined by reducing SDS-PAGE.

Storage Store at < -20°C, stable for 6 months after receipt.
Please minimize freeze-thaw cycles.

Concentration Please contact us for detailed information.

Shipping The product is shipped on dry ice/polar packs.
Upon receipt, store it immediately at the temperature listed below.

GENE INFORMATION

Gene Name [Tpsb2 tryptase beta 2\[Mus musculus \(house mouse\)\]](#)

Official Symbol [TPSB2](#)

Synonyms Tryptase beta-2; Tryptase-2; Mast cell protease 6; mMCP-6

Gene ID [17229](#)

mRNA Refseq [NM_010781.3](#)

Protein Refseq [NP_034911](#)

 Tel: 1-631-559-9269 1-516-512-3133

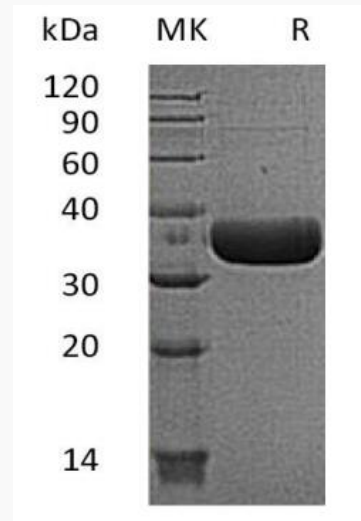
 Email: info@creative-biomart.com  Fax: 1-631-938-8127

 45-1 Ramsey Road, Shirley, NY 11967, USA

UniProt ID

P21845

SDS-PAGE of
TPSB2-419M



 Tel: 1-631-559-9269 1-516-512-3133

 Email: info@creative-biomart.com  Fax: 1-631-938-8127

 45-1 Ramsey Road, Shirley, NY 11967, USA