

# Recombinant Human TPSD1 Protein (Glu99-Glu191), N-His tagged

Cat. No. TPSD1-5434H Lot. No. (See product label)

## SPECIFICATION

**Product Overview** Recombinant human TPSD1 (Glu99-Glu191) fused with the N-His tag was expressed in E. coli.

**Species** Human

**Source** E.coli


**ProteinLength** Glu99-Glu191

### Description

Tryptases comprise a family of trypsin-like serine proteases, the peptidase family S1. Tryptases are enzymatically active only as heparin-stabilized tetramers, and they are resistant to all known endogenous proteinase inhibitors. Several tryptase genes are clustered on chromosome 16p13.3. These genes are characterized by several distinct features. They have a highly conserved 3' UTR and contain tandem repeat sequences at the 5' flank and 3' UTR which are thought to play a role in regulation of the mRNA stability. Although this gene may be an exception, most of the tryptase genes have an intron immediately upstream of the initiator Met codon, which separates the site of transcription initiation from protein coding sequence. This feature is characteristic of tryptases but is unusual in other genes. Tryptases have been implicated as mediators in the pathogenesis of asthma and other allergic and inflammatory disorders. This gene was once considered to be a pseudogene, although it is now believed to be a functional gene that encodes a protein.

 Tel: 1-631-559-9269 1-516-512-3133

 Email: [info@creative-biomart.com](mailto:info@creative-biomart.com)  Fax: 1-631-938-8127

 45-1 Ramsey Road, Shirley, NY 11967, USA

<b>Form</b>	Lyophilized powder/frozen liquid
<b>Molecular Mass</b>	12.79 kDa
<b>Purity</b>	> 90 % as determined by SDS-PAGE
<b>Notes</b>	For research use only.
<b>Storage</b>	Use a manual defrost freezer and avoid repeated freeze thaw cycles. Store at 2 to 8 centigrade for one week. Store at -20 to -80 centigrade for twelve months from the date of receipt.
<b>Storage Buffer</b>	0.01M PBS, pH 7.4, 0.02 % NLS
<b>Reconstitution</b>	Reconstitute in sterile water for a stock solution.
<b>Shipping</b>	They are shipped out with dry ice/blue ice unless customers require otherwise.
<b>GENE INFORMATION</b>	
<b>Gene Name</b>	TPSD1 tryptase delta 1 [ Homo sapiens (human) ]
<b>Official Symbol</b>	TPSD1
<b>Synonyms</b>	TPSD1; tryptase delta 1; MCP7L1; MMCP-7L; MCP7-LIKE; tryptase delta; delta-tryptase; hmMCP-3-like tryptase III; mMCP-7-like delta II tryptase; mMCP-7-like-1; mMCP-7-like-2; mast cell tryptase; tryptase-3; EC 3.4.21.59
<b>Gene ID</b>	23430
<b>mRNA Refseq</b>	NM_012217

 Tel: 1-631-559-9269 1-516-512-3133

 Email: [info@creative-biomart.com](mailto:info@creative-biomart.com)  Fax: 1-631-938-8127

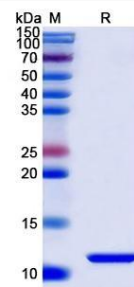
 45-1 Ramsey Road, Shirley, NY 11967, USA

**Protein Refseq** NP\_036349

**MIM** 609272

**UniProt ID** Q9BZJ3

**SDS-PAGE**



 Tel: 1-631-559-9269 1-516-512-3133

 Email: [info@creative-biomart.com](mailto:info@creative-biomart.com)  Fax: 1-631-938-8127

 45-1 Ramsey Road, Shirley, NY 11967, USA