

## Recombinant Mouse TPT1 Protein (1-172 aa), His-tagged

**Cat. No.** TPT1-1543M    **Lot. No.** (See product label)

### SPECIFICATION

<b>Product Overview</b>	Recombinant Mouse TPT1 Protein (1-172 aa) is produced by Yeast expression system. This protein is fused with a 6xHis tag at the N-terminal. Protein Description: Full Length.
<b>Species</b>	Mouse
<b>Source</b>	Yeast
<b>ProteinLength</b>	1-172 aa
<b>Description</b>	Involved in calcium binding and microtubule stabilization.
<b>Form</b>	Tris-based buffer,50% glycerol
<b>Molecular Mass</b>	21.5 kDa
<b>AA Sequence</b>	MIIYRDLISHDELFSIDIYKIREIADGLCLEVEGKMVSRTEGAIDDSLIGGNASAEGPEGE GTESTVVTVGVDIVMNHHLQETSFTKEAYKKYIKDYMKSLKGLKLEEQKPERVKPFMTG AAEQIKHILANFNYYQFFIGENMNPDMVALLDYREDGVTPPFMIFFKDGLEMEKC
<b>Purity</b>	> 90% as determined by SDS-PAGE.
<b>Notes</b>	Repeated freezing and thawing is not recommended. Store working aliquots at 4 centigrade for up to one week.

 Tel: 1-631-559-9269    1-516-512-3133

 Email: [info@creative-biomart.com](mailto:info@creative-biomart.com)     Fax: 1-631-938-8127

 45-1 Ramsey Road, Shirley, NY 11967, USA

**Storage** The shelf life is related to many factors, storage state, buffer ingredients, storage temperature and the stability of the protein itself. Generally, the shelf life of liquid form is 6 months at -20 centigrade/-80 centigrade. The shelf life of lyophilized form is 12 months at -20 centigrade/-80 centigrade.

**Concentration** A hardcopy of COA with reconstitution instruction is sent along with the products.

## GENE INFORMATION

**Gene Name** Tpt1 tumor protein, translationally-controlled 1 [ *Mus musculus* ]

**Official Symbol** TPT1

**Synonyms** TPT1; fortilin; Trt; p21; p23; TCTP;

**Gene ID** 22070

**mRNA Refseq** NM\_009429

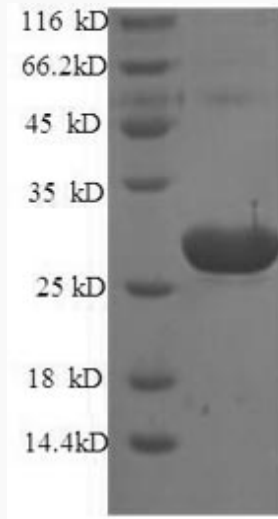
**Protein Refseq** NP\_033455

**UniProt ID** P63028

 Tel: 1-631-559-9269 1-516-512-3133

 Email: [info@creative-biomart.com](mailto:info@creative-biomart.com)  Fax: 1-631-938-8127

 45-1 Ramsey Road, Shirley, NY 11967, USA



(Tris-Glycine gel) Discontinuous SDS-PAGE (reduced) with 5% enrichment gel and 15% separation gel.

 Tel: 1-631-559-9269 1-516-512-3133

 Email: [info@creative-biomart.com](mailto:info@creative-biomart.com)  Fax: 1-631-938-8127

 45-1 Ramsey Road, Shirley, NY 11967, USA