

Recombinant Human TPT1, His-tagged

Cat. No. TPT1-1844H **Lot. No.** (See product label)

SPECIFICATION

Product Overview	Recombinant human TCTP protein produced in <i>E.coli</i> was recombined with His tag at the N Terminus. It was purified by using conventional chromatography techniques, 23.9 kDa (210aa).
Species	Human
Source	E.coli
Description	TCTP, also known as Translationally controlled tumor protein, is regulated at the translational level. This protein is involved in calcium binding and microtubule stabilization. It is an immunoglobulin E dependent histamine-releasing factor produced by lymphocytes of atopic children and present in biologic fluids of allergic patients.
Purity	> 90% by SDS - PAGE.
Form	Liquid. 20mM Tris-HCl buffer (pH8.0) containing 10% glycerol 0.1M NaCl.
Concentration	1 mg/ml (determined by Bradford assay).
Sequences Of Amino Acids	MRGSHHHHHH GMASMTGGQQ MGRDLYDDDD KDRWGSHMMI IYRDLISHDE MFSDIYKIRE IADGLCLEVE GKMVSRTEGN IDDSLIGGNASAEGPEGEGT ESTVITGVDI VMNHHLQETS FTKEAYKKYI KDYMKSIK GK LEEQRPERVK PFMTGAAEQI KHILANFKNY QFFIGENMNPDGMVALLDYR EDGVTPYMIF FKDGLEMEKC.

 Tel: 1-631-559-9269 1-516-512-3133

 Email: info@creative-biomart.com  Fax: 1-631-938-8127

 45-1 Ramsey Road, Shirley, NY 11967, USA

Stability Can be stored at +4°C short term (1-2 weeks). For long term storage, aliquot and store at -20°C or -70°C. Avoid repeated freezing and thawing cycles.

GENE INFORMATION

Gene Name TPT1 tumor protein, translationally-controlled 1 [Homo sapiens]

Synonyms tumor protein, translationally-controlled 1; HRF; p02; TCTP; FLJ27337; TPT1; p23; fortilin; histamine-releasing factor; translationally-controlled tumor protein; Fortilin; Histamine-releasing factor

Gene ID 7178

mRNA Refseq NM_003295.2

Protein Refseq NP_003286.1

MIM 600763

UniProt ID P13693

Chromosome Location 13q12-q14

Function calcium ion binding; protein binding

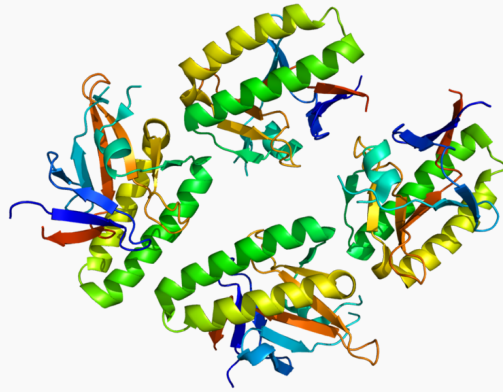
 Tel: 1-631-559-9269 1-516-512-3133

 Email: info@creative-biomart.com  Fax: 1-631-938-8127

 45-1 Ramsey Road, Shirley, NY 11967, USA



PDB rendering based
on 1yz1.



☎ Tel: 1-631-559-9269 1-516-512-3133

☎ Email: info@creative-biomart.com ☎ Fax: 1-631-938-8127

☎ 45-1 Ramsey Road, Shirley, NY 11967, USA