

# Recombinant Full Length Human TPT1 Protein, C-Flag-tagged

Cat. No. TPT1-263HFL    Lot. No. (See product label)

## SPECIFICATION

<b>Product Overview</b>	Recombinant Full Length Human TPT1 Protein, fused to Flag-tag at C-terminus, was expressed in Mammalian cells.
<b>Species</b>	Human
<b>Source</b>	Mammalian Cells
<b>Description</b>	This gene encodes a protein that is a regulator of cellular growth and proliferation. Its mRNA is highly structured and contains an oligopyrimidine tract (5'-TOP) in its 5' untranslated region that functions to repress its translation under quiescent conditions. The encoded protein is involved in a variety of cellular pathways, including apoptosis, protein synthesis and cell division. It binds to and stabilizes microtubules, and removal of this protein through phosphorylation is required for progression through mitotic and meiotic cell divisions. This gene is known to play a role in carcinogenesis, and is upregulated in some cancer cells. Alternative splicing results in multiple transcript variants encoding different isoforms.
<b>Form</b>	25 mM Tris HCl, pH 7.3, 100 mM glycine, 10% glycerol.
<b>Molecular Mass</b>	19.4 kDa
<b>AA Sequence</b>	<p> MIIYRDLISHDEMFSDIYKIREIADGLCLEVEGKMVSRTEGNIDDSLIGGNASAEGPEG  EGTESTVITGV DIVMNHHLQETSFTKEAYKKYIKDYMKSIKGLKEEQRPVVKPFMT  GAAEQIKHILANFKNYQFFIGENM  NPDGMVALLDYREDGVTPYMIFFKDGLEMEKCTRTRPLEQKLISEEDLAANDILDYK </p>

 Tel: 1-631-559-9269    1-516-512-3133

 Email: [info@creative-biomart.com](mailto:info@creative-biomart.com)     Fax: 1-631-938-8127

 45-1 Ramsey Road, Shirley, NY 11967, USA



	DDDDKV
<b>Purity</b>	> 80% as determined by SDS-PAGE and Coomassie blue staining.
<b>Stability</b>	Stable for 12 months from the date of receipt of the product under proper storage and handling conditions. Avoid repeated freeze-thaw cycles.
<b>Storage</b>	Store at -80 centigrade.
<b>Concentration</b>	>50 ug/mL as determined by microplate BCA method.
<b>Preparation</b>	Recombinant protein was captured through anti-DDK affinity column followed by conventional chromatography steps.
<b>Full Length</b>	Full L.

## GENE INFORMATION

<b>Gene Name</b>	TPT1 tumor protein, translationally-controlled 1 [ Homo sapiens (human) ]
<b>Official Symbol</b>	TPT1
<b>Synonyms</b>	HRF; p02; p23; TCTP
<b>Gene ID</b>	7178
<b>mRNA Refseq</b>	NM_003295.4
<b>Protein Refseq</b>	NP_003286.1
<b>MIM</b>	600763

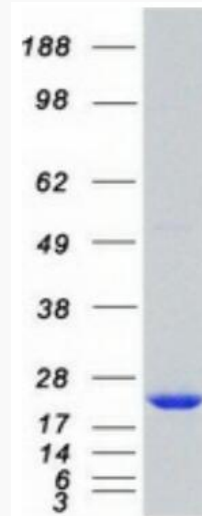
Tel: 1-631-559-9269 1-516-512-3133

Email: [info@creative-biomart.com](mailto:info@creative-biomart.com) Fax: 1-631-938-8127

45-1 Ramsey Road, Shirley, NY 11967, USA

UniProt ID

P13693



Coomassie blue staining of purified TPT1 protein.

 Tel: 1-631-559-9269 1-516-512-3133

 Email: [info@creative-biomart.com](mailto:info@creative-biomart.com)  Fax: 1-631-938-8127

 45-1 Ramsey Road, Shirley, NY 11967, USA