

# Recombinant Human TPX2 Protein, Myc/DDK-tagged, C13 and N15-labeled

**Cat. No.** TPX2-1921H    **Lot. No.** (See product label)

## SPECIFICATION

<b>Product Overview</b>	TPX2 MS Standard C13 and N15-labeled recombinant protein (NP_036244) with a C-terminal MYC/DDK tag, was expressed in HEK293 cells.
<b>Species</b>	Human
<b>Source</b>	HEK293
<b>Description</b>	Spindle assembly factor required for normal assembly of mitotic spindles. Required for normal assembly of microtubules during apoptosis. Required for chromatin and/or kinetochore dependent microtubule nucleation. Mediates AURKA localization to spindle microtubules. Activates AURKA by promoting its autophosphorylation at 'Thr-288' and protects this residue against dephosphorylation. TPX2 is inactivated upon binding to importin-alpha. At the onset of mitosis, GOLGA2 interacts with importin-alpha, liberating TPX2 from importin-alpha, allowing TPX2 to activates AURKA kinase and stimulates local microtubule nucleation.
<b>Molecular Mass</b>	85.7 kDa
<b>AA Sequence</b>	MSQVKSSYSYDAPSDFINFSSLDDEGDTQNIDSWFEEKANLENKLLGKNGTGGLFQ GKTPLRKANLQQAIVTPLKPVNDNTYYKEAEKENLVEQSIPSNACSSLEVEAAISRKTP AQPQRRSLRLSAQKDLEQKEKHHVKMKAKRCATPVIIDEILPSKMKVSNNKKKPEE EGSAHQDTAEKNASSPEKAKGRHTVPCMPPAKQKFLKSTEEQELEKSMKMQQEVV EMRKKNEEFKLLALAGIGQPVKKSVSQVTKSVDFHFRTDERIKQHPKNQEEYKEVN

 Tel: 1-631-559-9269    1-516-512-3133

 Email: [info@creative-biomart.com](mailto:info@creative-biomart.com)     Fax: 1-631-938-8127

 45-1 Ramsey Road, Shirley, NY 11967, USA

FTSELRKHPSSPARVTKGCTIVKPFNLSQGKKRTFDETVSTYVPLAQQVEDFHKRTP  
 NRYHLRSKKDDINLLPSKSSVTKICRDPQTPVLQTKHRARAVTCKSTAELEAEELEKL  
 QQYKFKARELDPRILEGGPILPKKPPVKPPTPEIGFDLEIEKRIQERESKKKTEDEHFE  
 FHSRPCPTKILEDVVGVPKVKLPITVPKSPAFALKNRIRMPTKEDEEEDEPVIKAQ  
 PVPHYGVFPKQIPEARTVEICPFSFDSRDKERQLQKEKKIKELQKGEVPKFKALPLP  
 HFDTINLPEKKVKNVTQIEPFCLETDRRGALKAQTWKHQLEEELRQQKEAACFKARP  
 NTVISQEPFVPKKEKKSVAEGLSGSLVQEPFQLATEKRAKERQELEKRM AEVEAQK  
 AQQLEEARLQEEEEQKKEELARLRRELVHKANPIRKYQGLEIKSSDQPLTVPVSPKFS  
 TRFHCTRTRPLEQKLISEEDLAANDILDYKDDDDKV

**Purity** > 80% as determined by SDS-PAGE and Coomassie blue staining

**Stability** Stable for 3 months from receipt of products under proper storage and handling conditions.

**Storage** Store at -80 centigrade. Avoid repeated freeze-thaw cycles.

**Concentration** 50 µg/mL as determined by BCA

**Storage Buffer** 100 mM glycine, 25 mM Tris-HCl, pH 7.3.

## GENE INFORMATION

**Gene Name** TPX2 TPX2 microtubule nucleation factor [ Homo sapiens (human) ]

**Official Symbol** TPX2

**Synonyms**

TPX2; TPX2, microtubule-associated, homolog (Xenopus laevis); C20orf1, C20orf2, chromosome 20 open reading frame 1; targeting protein for Xklp2; DIL 2; p100; protein fls353; differentially expressed in lung cells; TPX2, microtubule-associated protein homolog; preferentially expressed in colorectal cancer; hepatocellular

 Tel: 1-631-559-9269 1-516-512-3133

 Email: [info@creative-biomart.com](mailto:info@creative-biomart.com)  Fax: 1-631-938-8127

 45-1 Ramsey Road, Shirley, NY 11967, USA

carcinoma-associated antigen 519; restricted expression proliferation associated protein 100; restricted expression proliferation-associated protein 100; differentially expressed in cancerous and non-cancerous lung cells 2; DIL2; DIL-2; HCTP4; FLS353; HCA519; REPP86; C20orf1; C20orf2; GD:C20orf1;

**Gene ID** [22974](#)

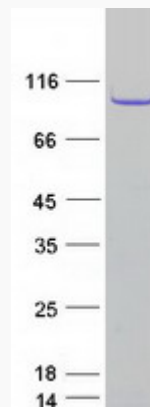
**mRNA Refseq** [NM\\_012112](#)

**Protein Refseq** [NP\\_036244](#)

**MIM** [605917](#)

**UniProt ID** [Q9ULW0](#)

**SDS-PAGE**



 Tel: 1-631-559-9269 1-516-512-3133

 Email: [info@creative-biomart.com](mailto:info@creative-biomart.com)  Fax: 1-631-938-8127

 45-1 Ramsey Road, Shirley, NY 11967, USA