

Active Recombinant Full Length Human TPX2 Protein, C-Flag-tagged

Cat. No. TPX2-222HFL Lot. No. (See product label)

SPECIFICATION

Product Overview

Recombinant Full Length Human TPX2 Protein, fused to Flag-tag at C-terminus, was expressed in Mammalian cells.

Species

Human

Source

Mammalian Cells

Description

Spindle assembly factor required for normal assembly of mitotic spindles. Required for normal assembly of microtubules during apoptosis. Required for chromatin and/or kinetochore dependent microtubule nucleation. Mediates AURKA localization to spindle microtubules. Activates AURKA by promoting its autophosphorylation at 'Thr-288' and protects this residue against dephosphorylation. TPX2 is inactivated upon binding to importin-alpha. At the onset of mitosis, GOLGA2 interacts with importin-alpha, liberating TPX2 from importin-alpha, allowing TPX2 to activate AURKA kinase and stimulates local microtubule nucleation

Form


25 mM Tris HCl, pH 7.3, 100 mM glycine, 10% glycerol.

Bio-activity

TPX2 activity in a microtubule binding assay: SAF-A binds to MT in a TPX2-dependent manner. MT binding analysis of isolated SAF-A protein in the presence of different amounts of recombinant TPX2 protein. The lower panel shows western blotting with anti-SAF-A antibody. SAF-A co-pelleted with MT was increased, dependent on the amount of TPX2.

 Tel: 1-631-559-9269 1-516-512-3133

 Email: info@creative-biomart.com  Fax: 1-631-938-8127

 45-1 Ramsey Road, Shirley, NY 11967, USA

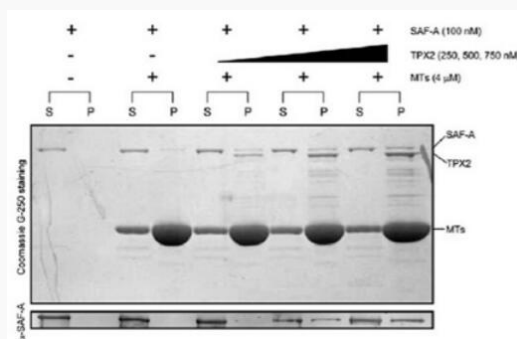
| | |
|-----------------------|--|
| Molecular Mass | 85.5 kDa |
| AA Sequence | <p>MSQVKSSYSYDAPSDFINFSSLDDEGDTQNIDSWFEEKANLENKLLGKNGTGGLFQ GKTPLRKANLQQAI VTPLKPVNTYYKEAEKENLVEQSIPSNACSSLEVEAAISRKTP AQPQRRSLRLSAQKDLEQKEKHHVKM KAKRCATPVIIDEILPSKMKMVSNNKKKPEE EGSAHQDTAEKNASSPEKAKGRHTVPCMPPAKQKFLKST EEQELEKSMKMQQEV VEMRKKNEEFKKLALAGIGQPVKKSVSQVTKSVDFHFRTDERIKQHPKNQEEYKE V NFTSELRKHPSSPARVTKGCTIVKPFNLSQGKRTFDETVSTYVPLAQQVEDFHKRT PNRYHLRSKKDD INLLPSKSSVTKICRDPQTPVLQTKHRARAVTCKSTAELEAELEE KLQQYKFKARELDPRILEGGPILPK KPPVKPTEPIGFDLEIEKRIQERESKKKTEDEH FEFHSRPCPTKILEDVVGVPKVKLPITVPKSPAFA LKNRIRMPTKEDEEEDEPVIK AQPVPHYGVFPKQIPEARTVEICPFSFDSRDKERQLQKEKKIKELQK GEVPKFKAL PLPHFDTINLPEKKVKNVTQIEPFCLETDRRGALKAQTWKHQLEEEELRQQKEAACFK ARPN TVISQEPFVPKKEKKSVAEGLSGSLVQEPFQLATEKRAKERQELEKRM AEVE AQKAQQLEEARLQEEEQK KEELARLRRELVHKANPIRKYQGLEIKSSDQPLTPVPSPKFSTRFHCTRTRPLEQKLI SEEDLAANDILDYKDDDDKV</p> |
| Purity | > 80% as determined by SDS-PAGE and Coomassie blue staining. |
| Stability | Stable for 12 months from the date of receipt of the product under proper storage and handling conditions. Avoid repeated freeze-thaw cycles. |
| Storage | Store at -80 centigrade. |
| Concentration | >50 ug/mL as determined by microplate BCA method. |
| Preparation | Recombinant protein was captured through anti-DDK affinity column followed by conventional chromatography steps. |

 Tel: 1-631-559-9269 1-516-512-3133

 Email: info@creative-biomart.com  Fax: 1-631-938-8127

 45-1 Ramsey Road, Shirley, NY 11967, USA

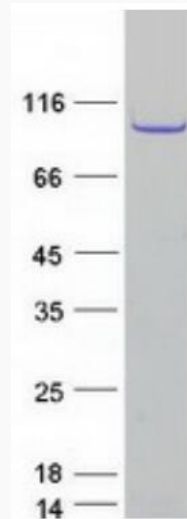
| | |
|-------------------------|--|
| Protein Families | Druggable Genome, Stem cell - Pluripotency |
| Full Length | Full L. |
| GENE INFORMATION | |
| Gene Name | TPX2 TPX2 microtubule nucleation factor [Homo sapiens (human)] |
| Official Symbol | TPX2 |
| Synonyms | DIL2; p100; DIL-2; HCTP4; FLS353; HCA519; REPP86; C20orf1; C20orf2; GD:C20orf1 |
| Gene ID | 22974 |
| mRNA Refseq | NM_012112.5 |
| Protein Refseq | NP_036244.2 |
| MIM | 605917 |
| UniProt ID | Q9ULW0 |



Tel: 1-631-559-9269 1-516-512-3133

Email: info@creative-biomart.com Fax: 1-631-938-8127

45-1 Ramsey Road, Shirley, NY 11967, USA



Coomassie blue staining of purified TPX2 protein.

Tel: 1-631-559-9269 1-516-512-3133

Email: info@creative-biomart.com Fax: 1-631-938-8127

45-1 Ramsey Road, Shirley, NY 11967, USA