

# Recombinant Full Length Human TRA2B Protein, C-Flag-tagged

**Cat. No.** TRA2B-1380HFL    **Lot. No.** (See product label)

## SPECIFICATION

### Product Overview

Recombinant Full Length Human TRA2B Protein, fused to Flag-tag at C-terminus, was expressed in Mammalian cells.

### Species

Human

### Source

Mammalian Cells

### Description

This gene encodes a nuclear protein which functions as sequence-specific serine/arginine splicing factor which plays a role in mRNA processing, splicing patterns, and gene expression. Alternative splicing results in multiple transcript variants.

### Form

25 mM Tris HCl, pH 7.3, 100 mM glycine, 10% glycerol.

### Molecular Mass

33.5 kDa

### AA Sequence

```

MSDSGEQNYGERESRSASRSGSAHGSGKSARHTPARSRKEDSRRSRKSRSR
ESRSRSTRSSRRHYTRSRSRSHRRSRRSYSRDYRRRHSHSHSPMSTRRRHV
GNRANPDPNCCLGVFGLSLYTTERDLREVFSK YGPIADVSIYDQQSRRSRGFAFV
YFENVDDAKEAKERANGMELDGRRIRVDFSITKRPHTPTPGIYMGR PTYGSSRRRD
YYDRGYDRGYDDRDIYSRSYRGGGGGGGWRAAQDRDQIYRRRSPSPYYSRGG
YRSRSRS
RSYSPRRYTRTRPLEQKLISEEDLAANDILDYKDDDDKV
    
```

 Tel: 1-631-559-9269    1-516-512-3133

 Email: [info@creative-biomart.com](mailto:info@creative-biomart.com)     Fax: 1-631-938-8127

 45-1 Ramsey Road, Shirley, NY 11967, USA

<b>Purity</b>	> 80% as determined by SDS-PAGE and Coomassie blue staining.
<b>Stability</b>	Stable for 12 months from the date of receipt of the product under proper storage and handling conditions. Avoid repeated freeze-thaw cycles.
<b>Storage</b>	Store at -80 centigrade.
<b>Concentration</b>	>50 ug/mL as determined by microplate BCA method.
<b>Preparation</b>	Recombinant protein was captured through anti-DDK affinity column followed by conventional chromatography steps.
<b>Protein Families</b>	Druggable Genome
<b>Protein Pathways</b>	Spliceosome
<b>Full Length</b>	Full L.

## GENE INFORMATION

<b>Gene Name</b>	TRA2B transformer 2 beta homolog [ Homo sapiens (human) ]
<b>Official Symbol</b>	TRA2B
<b>Synonyms</b>	SFRS10; SRFS10; TRAN2B; PPP1R156; TRA2-BETA; Htra2-beta
<b>Gene ID</b>	6434
<b>mRNA Refseq</b>	NM_004593.3
<b>Protein Refseq</b>	NP_004584.1

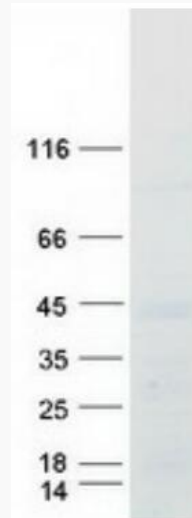
 Tel: 1-631-559-9269 1-516-512-3133

 Email: [info@creative-biomart.com](mailto:info@creative-biomart.com)  Fax: 1-631-938-8127

 45-1 Ramsey Road, Shirley, NY 11967, USA

**MIM** 602719

**UniProt ID** P62995



Coomassie blue staining of purified TRA2B protein.

 Tel: 1-631-559-9269 1-516-512-3133

 Email: [info@creative-biomart.com](mailto:info@creative-biomart.com)  Fax: 1-631-938-8127

 45-1 Ramsey Road, Shirley, NY 11967, USA