

Recombinant Human TRAC Protein (1-142 aa), His-tagged

Cat. No. TRAC-841H Lot. No. (See product label)

SPECIFICATION

Product Overview	Recombinant Human TRAC Protein (1-142 aa) is produced by E. coli expression system. This protein is fused with a 6xHis tag at the N-terminal. Research Area: Signal Immunology. Protein Description: Full Length.
Species	Human
Source	E.coli
ProteinLength	1-142 aa
Form	Tris-based buffer, 50% glycerol
Molecular Mass	19.9 kDa
AA Sequence	PNIQNPDPVYQLRDSKSSDKSVCLFTDFDSQTNVSQSKDSDVYITDKTVLDMRSM DFKSNSAVAWSNKSDFACANAFNNSIIPEDTFFPSPESSCDVKLVEKSFETDTNLNF QNLSVIGFRILLKLVAGFNLLMTLRLWSS
Purity	> 90% as determined by SDS-PAGE.
Notes	Repeated freezing and thawing is not recommended. Store working aliquots at 4 centigrade for up to one week.
Storage	The shelf life is related to many factors, storage state, buffer ingredients, storage temperature and the stability of the protein itself. Generally, the shelf life of liquid form

 Tel: 1-631-559-9269 1-516-512-3133

 Email: info@creative-biomart.com  Fax: 1-631-938-8127

 45-1 Ramsey Road, Shirley, NY 11967, USA

is 6 months at -20 centigrade/-80 centigrade. The shelf life of lyophilized form is 12 months at -20 centigrade/-80 centigrade.

Concentration A hardcopy of COA with concentration instruction is sent along with the products.

GENE INFORMATION

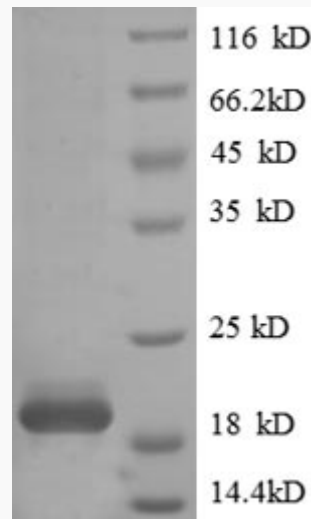
Gene Name TRAC T cell receptor alpha constant [Homo sapiens (human)]

Official Symbol TRAC

Synonyms TRA; IMD7; TCRA; TRCA;

Gene ID 28755

UniProt ID P01848



(Tris-Glycine gel) Discontinuous SDS-PAGE (reduced) with 5% enrichment gel and

 Tel: 1-631-559-9269 1-516-512-3133

 Email: info@creative-biomart.com  Fax: 1-631-938-8127

 45-1 Ramsey Road, Shirley, NY 11967, USA



15% separation gel.

 Tel: 1-631-559-9269 1-516-512-3133

 Email: info@creative-biomart.com  Fax: 1-631-938-8127

 45-1 Ramsey Road, Shirley, NY 11967, USA