

## Recombinant Human TRAF3 Protein (Lys6-Lys351), N-His tagged

Cat. No. TRAF3-6510H Lot. No. (See product label)

### SPECIFICATION

|                         |   |
|-------------------------|---|
| <b>Product Overview</b> | Recombinant human TRAF3 (Lys6-Lys351) fused with the N-His tag was expressed in E. coli.  |
| <b>Species</b>          | Human   |
| <b>Source</b>           | E.coli  |
| <b>ProteinLength</b>    | Lys6-Lys351   |
| <b>Form</b>             | Lyophilized powder/frozen liquid  |
| <b>Molecular Mass</b>   | 41.78 kDa   |
| <b>Purity</b>           | > 90 % as determined by SDS-PAGE  |
| <b>Notes</b>            | For research use only.  |
| <b>Storage</b>          | Use a manual defrost freezer and avoid repeated freeze thaw cycles. Store at 2 to 8 centigrade for one week. Store at -20 to -80 centigrade for twelve months from the date of receipt. |
| <b>Storage Buffer</b>   | 0.01M PBS, pH 7.4, 0.02 % NLS   |
| <b>Reconstitution</b>   | Reconstitute in sterile water for a stock solution.   |

 Tel: 1-631-559-9269 1-516-512-3133

 Email: [info@creative-biomart.com](mailto:info@creative-biomart.com)  Fax: 1-631-938-8127

 45-1 Ramsey Road, Shirley, NY 11967, USA

**Shipping** They are shipped out with dry ice/blue ice unless customers require otherwise.

## GENE INFORMATION

**Gene Name** TRAF3 TNF receptor-associated factor 3 [ Homo sapiens (human) ]

**Official Symbol** TRAF3

**Synonyms** TRAF3; TNF receptor-associated factor 3; CAP 1; CD40bp; CRAF1; LAP1; CD40 binding protein; CD40 associated protein 1; LMP1-associated protein 1; CD40 receptor associated factor 1; CAP-1;

**Gene ID** 7187

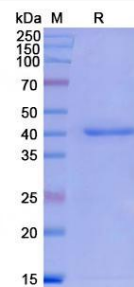
**mRNA Refseq** NM\_001199427

**Protein Refseq** NP\_001186356

**MIM** 601896

**UniProt ID** Q13114

## SDS-PAGE



 Tel: 1-631-559-9269 1-516-512-3133

 Email: [info@creative-biomart.com](mailto:info@creative-biomart.com)  Fax: 1-631-938-8127

 45-1 Ramsey Road, Shirley, NY 11967, USA