

Recombinant Human TRAIP protein, 10xHis-tagged

Cat. No. TRAIP-4814H Lot. No. (See product label)

SPECIFICATION

Product Overview	Recombinant Human TRAIP protein(Q9BWF2)(1-469aa), fused with N-terminal 10xHis tag, was expressed in E. coli.
Species	Human
Source	E.coli
ProteinLength	1-469aa
Tag	N-10xHis
Form	If the delivery form is liquid, the default storage buffer is Tris/PBS-based buffer, 5%-50% glycerol. If the delivery form is lyophilized powder, the buffer before lyophilization is Tris/PBS-based buffer, 6% Trehalose.
Molecular Mass	58.8 kDa
Purity	Greater than 85% as determined by SDS-PAGE.
Storage	Store at -20°C/-80°C upon receipt, aliquoting is necessary for mutiple use. Avoid repeated freeze-thaw cycles.
Reconstitution	We recommend that this vial be briefly centrifuged prior to opening to bring the contents to the bottom. Please reconstitute protein in deionized sterile water to a

 Tel: 1-631-559-9269 1-516-512-3133

 Email: info@creative-biomart.com  Fax: 1-631-938-8127

 45-1 Ramsey Road, Shirley, NY 11967, USA

concentration of 0.1-1.0 mg/mL. We recommend to add 5-50% of glycerol (final concentration) and aliquot for long-term storage at -20°C/-80°C.

AA Sequence

```

MPIRALCTICSDFFDHSRDVAIIHCGHTFHLQCLIQWFETAPSRTCPCQCRIQV GKRTII
NKLFFDLAQEEENVLDAEFLKNELDN VRAQLSQKDKEKRDSQVIIDTLRDTLEERNAT
VVSLQQALGKAEMLCSTLKKQMKYLEQQQDET KQAQEEARRLR SKMKTMEQIELLL
QSQRPEVEEMIRDMGVGQSAVEQLAVYCVSLKKEYENLKEARKASGEVADKLRKDL
FSSRSKLQTVYSELDQAKLELKSAQKDLQSADKEIMSLK KKL TMLQETLNLPPVASE
TVDRLVLESPAPVEVNLKLRPSFRDDIDL NATFDVDTPPARPSSSQHGYYEKLCLE
KSHSPIQDVPK KICKGPRKESQLSLGGQSCAGEPDEELVGAFPIFVRNAILGQKQPK
RPRSESSCSKDVVRTGFDGLGGRTKFIQPTDTVMIRPLPVKPKTKVKQRVRVKT VPS
LFQAKLDTFLWS
    
```

GENE INFORMATION

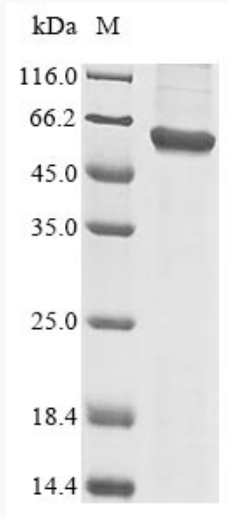
Gene Name	TRAIP TRAF interacting protein [Homo sapiens]
Official Symbol	TRAIP
Synonyms	TRAIP; TRAF interacting protein; TRAF-interacting protein; ring finger protein 206; RNF206; TRIP;
Gene ID	10293
mRNA Refseq	NM_005879
Protein Refseq	NP_005870
MIM	605958
UniProt ID	Q9BWF2

 Tel: 1-631-559-9269 1-516-512-3133

 Email: info@creative-biomart.com  Fax: 1-631-938-8127

 45-1 Ramsey Road, Shirley, NY 11967, USA

SDS-PAGE



 Tel: 1-631-559-9269 1-516-512-3133

 Email: info@creative-biomart.com  Fax: 1-631-938-8127

 45-1 Ramsey Road, Shirley, NY 11967, USA