

## Recombinant Human TRAP1 protein, GST-tagged

Cat. No. TRAP1-5201H Lot. No. (See product label)

### SPECIFICATION

<b>Product Overview</b>	Recombinant Human TRAP1 protein(Q12931)(60-308aa), fused to N-terminal GST tag, was expressed in E. coli.
<b>Species</b>	Human
<b>Source</b>	E.coli
<b>ProteinLength</b>	60-308aa
<b>Form</b>	If the delivery form is liquid, the default storage buffer is Tris/PBS-based buffer, 5%-50% glycerol. If the delivery form is lyophilized powder, the buffer before lyophilization is Tris/PBS-based buffer, 6% Trehalose, pH 8.0.
<b>Molecular Mass</b>	54.5 kDa
<b>Purity</b>	Greater than 90% as determined by SDS-PAGE.
<b>Storage</b>	Store at -20°C/-80°C upon receipt, aliquoting is necessary for multiple use. Avoid repeated freeze-thaw cycles.
<b>Reconstitution</b>	Please reconstitute protein in deionized sterile water to a concentration of 0.1-1.0 mg/mL. We recommend to add 5-50% of glycerol (final concentration) and aliquot for long-term storage at -20°C/-80°C. Our default final concentration of glycerol is 50%.

 Tel: 1-631-559-9269 1-516-512-3133

 Email: [info@creative-biomart.com](mailto:info@creative-biomart.com)  Fax: 1-631-938-8127

 45-1 Ramsey Road, Shirley, NY 11967, USA

## GENE INFORMATION

**Gene Name** TRAP1 TNF receptor-associated protein 1 [ Homo sapiens ]

**Official Symbol** TRAP1

**Synonyms** TRAP1; TNF receptor-associated protein 1; heat shock protein 75 kDa, mitochondrial; HSP75; HSP90L; HSP 75; TRAP-1; TNFR-associated protein 1; tumor necrosis factor type 1 receptor associated protein; tumor necrosis factor type 1 receptor-associated protein;

**Gene ID** 10131

**mRNA Refseq** NM\_016292

**Protein Refseq** NP\_057376

**MIM** 606219

**UniProt ID** Q12931

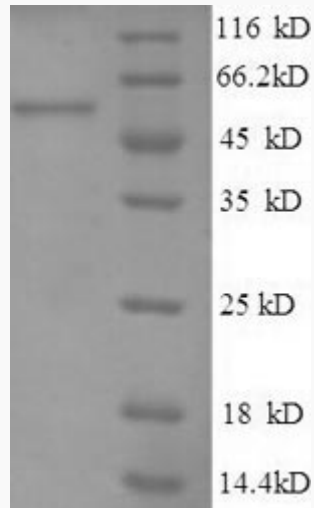
 Tel: 1-631-559-9269 1-516-512-3133

 Email: [info@creative-biomart.com](mailto:info@creative-biomart.com)  Fax: 1-631-938-8127

 45-1 Ramsey Road, Shirley, NY 11967, USA



SDS-PAGE



Tel: 1-631-559-9269 1-516-512-3133

Email: [info@creative-biomart.com](mailto:info@creative-biomart.com) Fax: 1-631-938-8127

45-1 Ramsey Road, Shirley, NY 11967, USA