

Recombinant Human TRAPPC2L Protein, Myc/DDK-tagged, C13 and N15-labeled

Cat. No. TRAPPC2L-3151H Lot. No. (See product label)

SPECIFICATION

Product Overview	TRAPPC2L MS Standard C13 and N15-labeled recombinant protein (NP_057293) with a C-terminal MYC/DDK tag, was expressed in HEK293 cells.
Species	Human
Source	HEK293
Description	This gene encodes a protein that interacts with the tethering factor trafficking protein particle (TRAPP complex). TRAPP complexes mediate the contact between vesicles and target membranes, and thus, are involved in vesicle-mediated transport of proteins and lipids. The encoded protein is related to the X-linked trafficking protein particle complex 2. A related pseudogene is located on the X chromosome. Alternative splicing results in multiple transcript variants encoding different isoforms.
Molecular Mass	16.1 kDa
AA Sequence	MAVCIAVIAKENYPLYIRSTPTENELKFHYMVHTSLDVVDEKISAMGKALVDQRELYL GLLYPTEDYKVGYYVTNSKVKFVMVVDSSNTALRDNEIRSMFRKLHNSYTDVMCNP FYNPGDRIQSSRAFDNMVTSMMIQVCTRTRPLEQKLISEEDLAANDILDYKDDDDKV
Purity	> 80% as determined by SDS-PAGE and Coomassie blue staining
Stability	Stable for 3 months from receipt of products under proper storage and handling conditions.

 Tel: 1-631-559-9269 1-516-512-3133

 Email: info@creative-biomart.com  Fax: 1-631-938-8127

 45-1 Ramsey Road, Shirley, NY 11967, USA

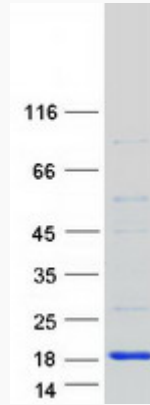
Storage	Store at -80 centigrade. Avoid repeated freeze-thaw cycles.
Concentration	50 µg/mL as determined by BCA
Storage Buffer	100 mM glycine, 25 mM Tris-HCl, pH 7.3.
GENE INFORMATION	
Gene Name	TRAPPC2L trafficking protein particle complex 2-like [Homo sapiens (human)]
Official Symbol	TRAPPC2L
Synonyms	TRAPPC2L; trafficking protein particle complex 2-like; PERRB; HSPC176; trafficking protein particle complex subunit 2-like protein; hematopoietic stem/progenitor cells 176
Gene ID	51693
mRNA Refseq	NM_016209
Protein Refseq	NP_057293
MIM	610970
UniProt ID	Q9UL33

 Tel: 1-631-559-9269 1-516-512-3133

 Email: info@creative-biomart.com  Fax: 1-631-938-8127

 45-1 Ramsey Road, Shirley, NY 11967, USA

SDS-PAGE



 Tel: 1-631-559-9269 1-516-512-3133

 Email: info@creative-biomart.com  Fax: 1-631-938-8127

 45-1 Ramsey Road, Shirley, NY 11967, USA