

Recombinant Human TRAPPC3 Protein, Myc/DDK-tagged, C13 and N15-labeled

Cat. No. TRAPPC3-5166H **Lot. No.** (See product label)

SPECIFICATION

Product Overview	TRAPPC3 MS Standard C13 and N15-labeled recombinant protein (NP_055223) with a C-terminal MYC/DDK tag, was expressed in HEK293 cells.
Species	Human
Source	HEK293
Description	This gene encodes a component of the trafficking protein particle complex, which tethers transport vesicles to the cis-Golgi membrane. The encoded protein participates in the regulation of transport from the endoplasmic reticulum to the Golgi apparatus. Alternative splicing results in multiple transcript variants.
Molecular Mass	20.3 kDa
AA Sequence	MSRQANRGTESKKMSSELF TLTYGALVTQLCKDYEN EDVNKQLDKMGFNIGVRLI EDFLARSNVGRCHDFRETADVIAKVAFKMYLGITPSITNWSPAGDEFSLILENNPLVD FVELPDNHSSLIYSNLLCGVLRGALEMVQMAVEAKFVQDTLKG DGVTEIRM FIRRIE DNLPAGEETRTRPLEQKLISEEDLAANDILDYKDDDDKV
Purity	> 80% as determined by SDS-PAGE and Coomassie blue staining
Stability	Stable for 3 months from receipt of products under proper storage and handling conditions.

 Tel: 1-631-559-9269 1-516-512-3133

 Email: info@creative-biomart.com  Fax: 1-631-938-8127

 45-1 Ramsey Road, Shirley, NY 11967, USA

Storage	Store at -80 centigrade. Avoid repeated freeze-thaw cycles.
Concentration	50 µg/mL as determined by BCA
Storage Buffer	100 mM glycine, 25 mM Tris-HCl, pH 7.3.

GENE INFORMATION

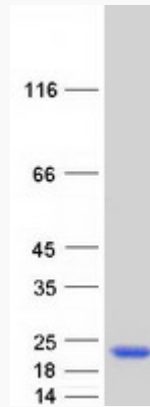
Gene Name	TRAPPC3 trafficking protein particle complex 3 [Homo sapiens (human)]
Official Symbol	TRAPPC3
Synonyms	TRAPPC3; trafficking protein particle complex 3; trafficking protein particle complex subunit 3; BET3; BET3 homolog; 1110058K12Rik;
Gene ID	27095
mRNA Refseq	NM_014408
Protein Refseq	NP_055223
MIM	610955
UniProt ID	O43617

 Tel: 1-631-559-9269 1-516-512-3133

 Email: info@creative-biomart.com  Fax: 1-631-938-8127

 45-1 Ramsey Road, Shirley, NY 11967, USA

SDS-PAGE



 Tel: 1-631-559-9269 1-516-512-3133

 Email: info@creative-biomart.com  Fax: 1-631-938-8127

 45-1 Ramsey Road, Shirley, NY 11967, USA