

# Recombinant Human TRAPPC6A Protein, Myc/DDK-tagged, C13 and N15-labeled

Cat. No. TRAPPC6A-2377H Lot. No. (See product label)

## SPECIFICATION

<b>Product Overview</b>	TRAPPC6A MS Standard C13 and N15-labeled recombinant protein (NP_077013) with a C-terminal MYC/DDK tag, was expressed in HEK293 cells.
<b>Species</b>	Human
<b>Source</b>	HEK293
<b>Description</b>	This gene encodes a component of the trafficking protein particle complex, which tethers transport vesicles to the cis-Golgi membrane. Loss of expression of the related gene in mouse affects coat and eye pigmentation, suggesting that the encoded protein may be involved in melanosome biogenesis. Alternatively spliced transcript variants encoding multiple isoforms have been observed for this gene.
<b>Molecular Mass</b>	18.9 kDa
<b>AA Sequence</b>	MADTVLFEFLHTEMVAELWAHDPDPGPGVVSAGLRGEEAGATKGQKMSLSVLEGMG FRVGQALGERLPRETLAFREELDVLKFLCKDLWVAVFQKQMSLRTNHQGTYVLQD NSFPLLLPMASGLQYLEEAPKFLAFTCGLLRGALYTLGIESVVTASVAALPVCKFQVVI PKSTRTRPLEQKLISEEDLAANDILDYKDDDDKV
<b>Purity</b>	> 80% as determined by SDS-PAGE and Coomassie blue staining
<b>Stability</b>	Stable for 3 months from receipt of products under proper storage and handling conditions.

 Tel: 1-631-559-9269 1-516-512-3133

 Email: [info@creative-biomart.com](mailto:info@creative-biomart.com)  Fax: 1-631-938-8127

 45-1 Ramsey Road, Shirley, NY 11967, USA

<b>Storage</b>	Store at -80 centigrade. Avoid repeated freeze-thaw cycles.
<b>Concentration</b>	50 µg/mL as determined by BCA
<b>Storage Buffer</b>	100 mM glycine, 25 mM Tris-HCl, pH 7.3.
<b>GENE INFORMATION</b>	
<b>Gene Name</b>	TRAPPC6A trafficking protein particle complex 6A [ Homo sapiens (human) ]
<b>Official Symbol</b>	TRAPPC6A
<b>Synonyms</b>	TRAPPC6A; trafficking protein particle complex 6A; trafficking protein particle complex subunit 6A; HSPC289; MGC2650; TRS33; TRAPPC6Adelta29-42; TRAPP complex subunit 6A;
<b>Gene ID</b>	79090
<b>mRNA Refseq</b>	NM_024108
<b>Protein Refseq</b>	NP_077013
<b>MIM</b>	610396
<b>UniProt ID</b>	O75865

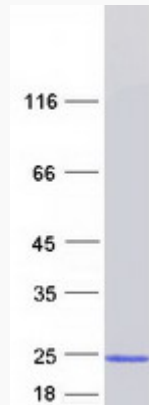
 Tel: 1-631-559-9269 1-516-512-3133

 Email: [info@creative-biomart.com](mailto:info@creative-biomart.com)  Fax: 1-631-938-8127

 45-1 Ramsey Road, Shirley, NY 11967, USA



SDS-PAGE



Tel: 1-631-559-9269 1-516-512-3133

Email: [info@creative-biomart.com](mailto:info@creative-biomart.com) Fax: 1-631-938-8127

45-1 Ramsey Road, Shirley, NY 11967, USA