

Recombinant Human TRAT1 Protein, Myc/DDK-tagged, C13 and N15-labeled

Cat. No. TRAT1-958H **Lot. No.** (See product label)

SPECIFICATION

Product Overview	TRAT1 MS Standard C13 and N15-labeled recombinant protein (NP_057472) with a C-terminal MYC/DDK tag, was expressed in HEK293 cells.
Species	Human
Source	HEK293
Description	TRAT1 (T Cell Receptor Associated Transmembrane Adaptor 1) is a Protein Coding gene. Diseases associated with TRAT1 include Arthrogryposis, Renal Dysfunction, And Cholestasis 1 and Autosomal Recessive Limb-Girdle Muscular Dystrophy Type 2H. Among its related pathways are RET signaling and Signaling by GPCR. Gene Ontology (GO) annotations related to this gene include transmembrane receptor protein tyrosine kinase adaptor activity.
Molecular Mass	21.2 kDa
AA Sequence	MSGISGCPFFLWGLLALLGLALVISLIFNISHYVEKQRQDKMYSYSSDHTRVDEYYIE DTPIYGNLDDMISEPMDENCYEQMKARPEKSVNKMQEATPSAQATNETQMCYASL DHSVKGKRRKPRKQNTHFSDKDGDEQLHAIDASVSKTTLVDSFSPESQAVEENIHD DPIRLFGLIRAKREPINTRTRPLEQKLISEEDLAANDILDYKDDDDKV
Purity	> 80% as determined by SDS-PAGE and Coomassie blue staining
Stability	Stable for 3 months from receipt of products under proper storage and handling

 Tel: 1-631-559-9269 1-516-512-3133

 Email: info@creative-biomart.com  Fax: 1-631-938-8127

 45-1 Ramsey Road, Shirley, NY 11967, USA

conditions.

Storage Store at -80 centigrade. Avoid repeated freeze-thaw cycles.

Concentration 50 µg/mL as determined by BCA

Storage Buffer 100 mM glycine, 25 mM Tris-HCl, pH 7.3.

GENE INFORMATION

Gene Name [TRAT1 T cell receptor associated transmembrane adaptor 1 \[Homo sapiens \(human\) \]](#)

Official Symbol [TRAT1](#)

Synonyms TRAT1; T cell receptor associated transmembrane adaptor 1; T cell receptor interacting molecule, TCRIM; T-cell receptor-associated transmembrane adapter 1; HSPC062; TRIM; pp29/30; T cell receptor interacting molecule; T-cell receptor interacting molecule; T-cell receptor-interacting molecule; TCRIM;

Gene ID [50852](#)

mRNA Refseq [NM_016388](#)

Protein Refseq [NP_057472](#)

MIM [604962](#)

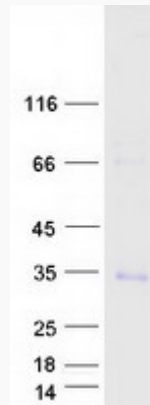
UniProt ID [Q6PIZ9](#)

 Tel: 1-631-559-9269 1-516-512-3133

 Email: info@creative-biomart.com  Fax: 1-631-938-8127

 45-1 Ramsey Road, Shirley, NY 11967, USA

SDS-PAGE



 Tel: 1-631-559-9269 1-516-512-3133

 Email: info@creative-biomart.com  Fax: 1-631-938-8127

 45-1 Ramsey Road, Shirley, NY 11967, USA