

Recombinant Rhesus Monkey TREM1 Protein, His-tagged

Cat. No. TREM1-125R Lot. No. (See product label)

SPECIFICATION

Product Overview	Recombinant Rhesus Monkey TREM1 Protein, fused to His-tag, was expressed in E. coli.
Species	Rhesus macaque
Source	E.coli
Description	This gene encodes a receptor belonging to the Ig superfamily that is expressed on myeloid cells. This protein amplifies neutrophil and monocyte-mediated inflammatory responses triggered by bacterial and fungal infections by stimulating release of pro-inflammatory chemokines and cytokines, as well as increased surface expression of cell activation markers. Alternatively spliced transcript variants encoding different isoforms have been noted for this gene.
Form	Supplied as a 0.2 µm filtered solution in PBS, pH8.0.
Molecular Mass	~21.8 kDa
AA Sequence	MTTELTEEKYEYKEGQTLEVKCDYALEKYANSRKAWQKMEGKMPKILAKTERPSEN SHPVQVGRITLEDYDPDHGLLQVQMTNLQVEDSGLYQCVIYQHPKESHVLFNPICLVV TKGSSGTPGSSSENSTQNVYRTPSTTAKALGPRTYSPRTVTQAPPESTVVVSTPGSEI NLTNVTDIIRVPVFNILEHHHHHH
Purity	>90%

 Tel: 1-631-559-9269 1-516-512-3133

 Email: info@creative-biomart.com  Fax: 1-631-938-8127

 45-1 Ramsey Road, Shirley, NY 11967, USA

Storage	Store it under sterile conditions at -20 to -80 centigrade. It is recommended that the protein be aliquoted for optimal storage. Avoid repeated freeze-thaw cycles.
----------------	---

Concentration	0.07 mg/ml
----------------------	------------

GENE INFORMATION

Gene Name	TREM1 triggering receptor expressed on myeloid cells 1 [<i>Macaca mulatta</i> (Rhesus monkey)]
------------------	--

Official Symbol	TREM1
------------------------	-------


Synonyms	CD354; TREM-1
-----------------	---------------

Gene ID	693558
----------------	--------

mRNA Refseq	XM_001082517
--------------------	--------------

Protein Refseq	XP_001082517
-----------------------	--------------

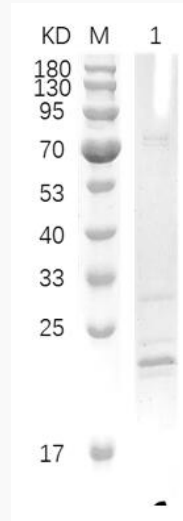
UniProt ID	Q5RDA5
-------------------	--------

 Tel: 1-631-559-9269 1-516-512-3133


 Email: info@creative-biomart.com  Fax: 1-631-938-8127

 45-1 Ramsey Road, Shirley, NY 11967, USA

SDS-PAGE



12% reducing SDS-PAGE analysis of purified TREM (approximately 1 mg protein loaded).

 Tel: 1-631-559-9269 1-516-512-3133

 Email: info@creative-biomart.com  Fax: 1-631-938-8127

 45-1 Ramsey Road, Shirley, NY 11967, USA