

Recombinant Pig TREM1 Protein, His-tagged

Cat. No. TREM1-214P Lot. No. (See product label)

SPECIFICATION

Product Overview	Recombinant Pig TREM1(Gln19~Pro238) fused with His tag at N-terminal was expressed in E. coli.
Species	Pig
Source	E.coli
ProteinLength	Gln19~Pro238
Description	TREM1 played an important role in many functions.
Form	PBS, pH7.4, containing 0.01% SKL, 1mM DTT, 5% Trehalose and Proclin300.
Molecular Mass	25.8kDa
Identity	Reconstitute in PBS or others
Endotoxin	<1.0EU per 1g (determined by the LAL method)
Purity	> 95%
Applications	Positive Control; Immunogen; SDS-PAGE; WB. If bio-activity of the protein is needed, please check active protein
Stability	The thermal stability is described by the loss rate. The loss rate was determined by

 Tel: 1-631-559-9269 1-516-512-3133

 Email: info@creative-biomart.com  Fax: 1-631-938-8127

 45-1 Ramsey Road, Shirley, NY 11967, USA

accelerated thermal degradation test, that is, incubate the protein at 37 centigrade for 48h, and no obvious degradation and precipitation were observed. The loss rate is less than 5% within the expiration date under appropriate storage condition.

Storage

Avoid repeated freeze/thaw cycles. Store at 2-8 centigrade for one month. Aliquot and store at -80 centigrade for 12 months.

Reconstitution

Reconstitute in PBS or others

GENE INFORMATION

Gene Name

TREM1 triggering receptor expressed on myeloid cells 1 [*Sus scrofa*]

Official Symbol

TREM1

Synonyms

TREM1; triggering receptor expressed on myeloid cells 1; triggering receptor expressed on myeloid cells-1; TREM-1;

Gene ID

396601

mRNA Refseq

NM_213756

Protein Refseq

NP_998921

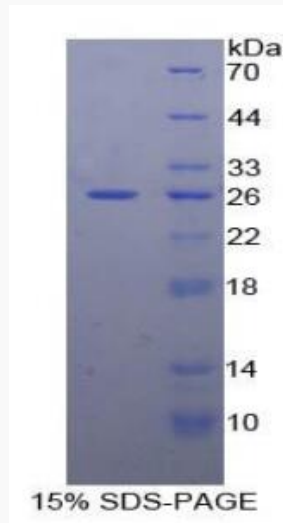
UniProt ID

Q6TYI6

 Tel: 1-631-559-9269 1-516-512-3133

 Email: info@creative-biomart.com  Fax: 1-631-938-8127

 45-1 Ramsey Road, Shirley, NY 11967, USA



Tel: 1-631-559-9269 1-516-512-3133

Email: info@creative-biomart.com Fax: 1-631-938-8127

45-1 Ramsey Road, Shirley, NY 11967, USA